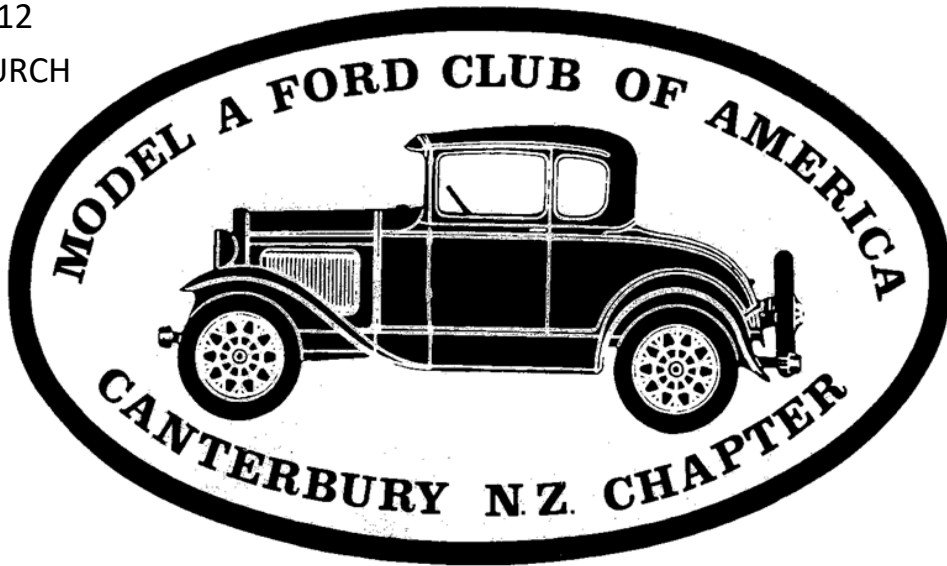


PO BOX 4212
CHRISTCHURCH



A Ford Script



AUGUST 2017

A Ford Script

Official Newsletter of THE MODEL "A" FORD CLUB OF AMERICA

Canterbury New Zealand Chapter. PO Box 4212 Christchurch

COMMITTEE

Club Captain	Graham Evans	(03)351-5919
Vice Club Captain	Bruce Miles	027 2389692
Treasurer	Barrie Shipley	(03)383-4640
Secretary	Brent Miles	(03)349-8108

General Committee

Anne Evans		(03)351-5919
Peter Bayler		(03)313-7067
David Dacombe		(03)313-7341
Russell Genet		(03)329-9065
Lindsay and Annette Painter		(03)342-5247
Graeme Scott		(03)323-8106
Rod Corbett		027 4338772
Webmaster	Kevin Straw	(03)338-3686
Assistant Webmaster	Ken James	(03)980-0547
Script Editors	Russell & Wendy Genet	(03)329-9065
Club Car Custodian	Graham Evans	(03)351-5919

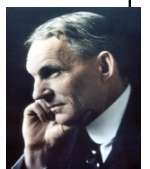
Website www.modelaford.co.nz

Script email afordscript@gmail.com

COVER . This is the life. Taken on an Irishman's outing.

HENRY FORD QUOTE.

Employers only handle the money – it is the customer who pays the wages.



CLUB CAPTAIN'S REPORT



This is my last report prior to the AGM, some of you may have viewed the financial report and identified that this year's profit amounted to \$1371.

On reviewing the 2016 balance sheet, you will see that this year, with the committee's prudent spending on event costs and fund raising to cover some events has reduced the cost in 2016 from \$3110 to \$1253. The club car storage garage is still an issue to be considered, the adjacent rental has been vacant for the last 12 months, and this will require close monitoring.

It is the committee's opinion that subscriptions should remain unchanged for the new financial year.

We also have a proposal for a "public liability insurance." This is to cover incidents over and above car insurance and ACC.

I have enjoyed my time as Club Captain and a special mention is the increase in numbers attending the monthly outings and social activities.

With this in mind, I would like to thank the committee members for the support they have given me and in particular their willingness to volunteer to organise the various events.

Graham Evans.

CLUB CAR REPORT

Gearbox slipping out of 3rd Gear, to be addressed at a Club Car Workshop in August / September.

I intend to swap the inner cable of the speedo to establish if gearbox drive is the issue.

NEXT COMMITTEE MEETING:

Next committee meeting is 7.30pm, **Tuesday 15th August** 2017, at David Dacombe's home 3 Green Street Rangiora. If you have any matters you would like raised, please contact a committee member before this date.

ANNUAL GENERAL MEETING

Sunday July 30th Meeting at 11.30 am

Followed by Sunday Lunch at the Elmwood Trading Co. Normans Rd, Strowan.

COMING EVENTS

August 13th Sunday. 10.00 am

A run and a chance to see a shed full of surprises.

Meet at Speights Alehouse carpark at Tower Junction at 10.00 am.

Bring a picnic lunch which we will have at John Winchester's shed .

Following this visit, for those interested we will meet for an early meal at Hornby Workingmans Club. You can decide on the day. David Dacombe is organising this run.

September 15th and 16th September Weekend.

International Model A Day weekend in Hokitika.

Organised by the Coasters. Contact ri.devlin@xtra.co.nz

Entry forms have been emailed out, also attached to this Script.

Alternative September outing.

A Spring Festival will be held on 9 September in Cheviot. This could be a good time to meet up with the Daimler Car Club.

This event has a trade fair atmosphere and is a chance for Christchurch people to travel to Cheviot for a visit, following the Kaikoura Earthquakes.

We had tentatively suggested a combined Gymkhana event with the Daimler Car Club, they are happy to join us.

As this activity doubles with the International Model A Day in September, those that aren't going to Hokitika may wish to join us.

Please advise your interest to Graham Ph 03 3515919 or email gaevans@xtra.co.nz

Non Club Event

Selwyn Motor Fest

Sunday 26th November 2017.

They're hoping to attract 1,000 vehicles for display as a fund-raising family fun day event for Selwyn St John Ambulance. Registration is only \$10 per vehicle & it's a very worthy cause. Advertising flyer on back cover.

NIGHT TRIAL

20th May saw a good turnout from members to the home of Brent and Lyn for the start of the night trial. We were greeted with nibbles and a drink of mulled wine to warm you up on what was a chilly end to Autumn.

We left our contribution towards the Pot Luck dinner with them and after being given our directions we headed off into the dark countryside to our mystery destination. Travelling through many road works around the Templeton/Broadfields area (most of these are to be incorporated into the new Southern Motorway system), we headed into Prebbleton with a quick stop at the Prebbleton Cemetery to answer one of the quiz questions, off through to check out a local church and then out through the Lincoln township and into darkness again.

Torches were very important to manoeuvre your way through the dark roads with road signs not always visible, and just to make things a little more interesting, Lyn had secretly given out 2 sets of directions at the beginning of the trial to keep us from following the leader – some worked this out, others not so lucky!

We were soon at our destination, given away by the amount of cars parked on the roadside – the Springston South Community Hall. The Supper Room was warm and cosy and the conversation and drinks were flowing when we got there. We answered our last 3 questions before joining the group in conversation and waited for the remaining to arrive. A couple a little later than anticipated!

Once everyone had arrived, we all helped ourselves to the lovely Pot Luck meal and sat around the tables to eat and chat. Dessert followed this and then later the inevitable clean up which was made easier by everyone having taken their own plates, glasses and utensils making washing up minimal.

Our thanks go to Brent and Lyn for organising this event and to the helpers on the night.

Results will be announced at the AGM .

Heather and Glenn Birnie.



PS Although I don't like mice, I do hope the little mouse got to eat some crumbs after we all left!

QUIZ

1. What is the legal alcohol limit for driving in New Zealand , in milligrams per millilitre of blood?
2. If a school bus displays a school bus sign and has stopped for purposes of picking up or dropping off children, what is the maximum speed you are allowed when passing it?
3. Does this apply going either direction?
4. Are you allowed to double park outside a school?
5. What is the closest you can park to a vehicle entrance?
6. What is the maximum distance a load on the roof rack can extend beyond your car?
7. A light, flat-decked vehicle that is parked on the street at night must display a rear red light that is visible at a distance of how many metres.
8. If you are towing a disabled vehicle at night, should the towed vehicle have it's head-lights on?
9. No closer than how many metres close to a pedestrian crossing can you park on the approach side?
10. If you intend to travel more than halfway round a roundabout, which way do you indicate as you approach the round about?
11. If you are going straight ahead at a round about , do you need to signal left as you pass the exit one before the one you wish to take?

Do YOU always signal at roundabouts? (ALWAYS?)

Answers on page 9 and in the NZ Road Code.

Reasons to always wear Underwear

From the local paper comes this story of a Brisbane couple who drove their car to the shopping centre, only to have it break down in the car park. The man told his wife to carry on with the shopping while he fixed it.

The wife returned later to see a small group of people near the car. On closer inspection, she saw a pair of hairy legs protruding from under the chassis. Unfortunately, although the man was in shorts, his lack of underpants turned his private parts into glaringly public ones. Unable to stand the embarrassment, she dutifully stepped forward and quickly put her hand up his shorts, and tucked everything back into place.

On regaining her feet she looked across the bonnet and found herself staring at her husband who was standing idly by watching.

The AA mechanic however, had to have three stitches in his forehead. Thanks Barbara.

For Sale

5 x 1935 16inch V8 wheels & 650 x 16 tyres

Cream powder coated rims with near new tyres \$1250

Contact Barney Goble tel 027 230 5529 or 06 758 7895. New Plymouth

Model A member Rod Corbett has seen and can advise if required.



EXCESSIVE PLAY IN THE FRONT WHEELS/ AXLES AND BEARINGS.

Whilst it is relatively easy to detect play or movement in the front wheel bearings and king pin bushes in the front axles, one location that can be overlooked is wear in the top and bottom of the eye of the front axle. The locking bolt that secures the king pin in the front axle must be kept dead tight to prevent wear in the extremities of the eye of the axle.

One technique to reduce or eliminate this play is to fit oversized kingpins. The eye of the axle may need to be carefully reamed to result in a tight fit of the oversized pin. The king pin bushes in the axle will then have to be reamed to achieve a firm sliding fit between the king pin and the bush. New locking bolts should be installed. There were three styles of locking bolts used from the start of production up to mid 1929 and the Style No. 3, which is a cotter pin type with a single large nut, was used until the end of production. Also the securing nut should be positioned to the rear as it acts as a stop.

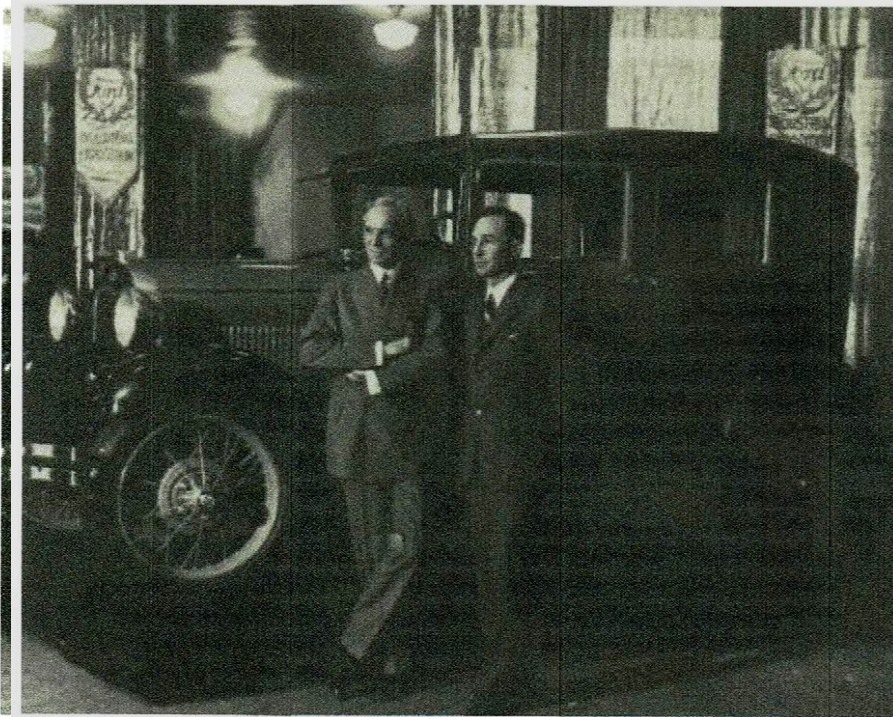
Some years ago the writer used this technique on our Model A front end and this source of play or movement was eliminated.

The Model A Ford Club of South Australia provides oversized king pins on an exchange basis. In the past the oversize pins were approx 0.008 inch oversize. For current availability, details and price contact Model A Ford Club of SA, PO Box 202, North Adelaide, 5006 or visit their Web Site

John Moorehead Member 68

Model A Restorers Club of Western Australia (Inc)

Five Reasons Why We (and everyone else) Love the Ford Model A



It's that time of year again, and Old Car Festival inside The Henry Ford's Greenfield Village is *the* place to see Ford Model As. The beloved automobile will make up almost a quarter of the sweet rides on display this year. But wait, Old Car Festival covers 42 years of vehicles, 1890-1932, so why are there so many from the four years the Model A was produced? After some research and talking with our Curator of Transportation Matt Anderson, here's why.

5. You can drive it on the road

Okay, this one seems pretty obvious. But some restored vehicles, no matter how sexy they look, tend to putt along on side streets with lower speed limits. With higher speeds and better brakes, Model As are known to drive pretty darn well on modern roads. Despite being 80+ years old, many Model As can cruise easily at 40-45 miles per hour thanks to an engine exactly twice as powerful as its predecessor, the Model T. And the Model A's mechanical brake system on the wheels—admittedly

less secure than a hydraulic brake system—is safer than the Model T's mechanical brakes on the transmission.

Of course, Model Ts are still extremely popular and drivable, but most vintage car owners want to show off their prized vehicles on the open road, and the Model A gives us more route options. Racing down the freeway might not be an option, but give the car a break—the Model A is older than some of our grandmas. And my grandma doesn't drive the freeway, either.

4. You can learn to drive it without a historian present

So the Model A can handle the road. But more importantly, today's drivers can handle the Model A. The car was the first Ford to have controls we're used to, like gas pedals, and a conventional gear-shift lever to name a few. Before the Model A, Ford "horseless carriages" like the Model T were built under the assumption the driver only had experience driving, well a *carriage*, horse included.

More modern controls in the

Model A help drivers like me and you guess how to, you know, put it in gear or make it stop. We might still need to Google, "how to drive a Model A," but at least we're not completely lost at the wheel.

3. Replacement parts are not crazy difficult to find

If you've got a vintage car that's the coolest, most obscure, one-of-three-ever-made—congratulations. But you know where I'm going with this. Collectors or rare cars dread the day they need to replace a part because finding one or getting a new one made is no easy task. Not all car buffs have the luxury of that kind of time, energy or money.

But with the Model A, a lot of original parts are still floating around out there since Ford built right around 5 million Model As between the 1928 and 1931 model years. And as our Model A love is no secret, there are now vendors who make less expensive, sometimes, more reliable copies of vintage parts. So the Model A is a sweet vintage vehicle, *plus*, the replacement parts are comparatively easier to get ahold of. Especially if you look in the right places, like Bert's Model A Ford Store in Denver, the Model A Ford club of America's classified ads or the Model A Restorers Club's classified ads.

We're not saying restoring a Model A is easy by any means, but the availability of parts opens up the art of car restoration to more of use because the Model A is fun to restore and maintain, not a giant headache.

2. They're relatively affordable

This isn't rocket science, but it's true. Let's revisit a fun-fact we gave you two paragraphs ago: about 5 million Ford Model As were made, and a lot of them are still around. So the Model A is historic, but it isn't quite rare enough

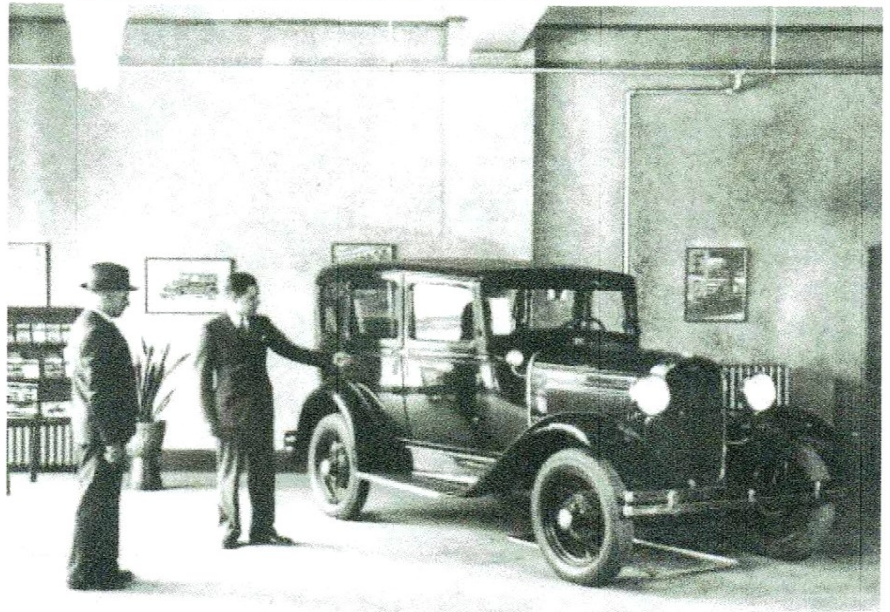
to cost an arm and a leg—a phrase which here means the \$70,000 you could pay for a Packard of the same vintage. Yikes!

Some highly scientific research (looking on eBay) revealed there are decent Model A's out there priced as low as \$6,000. What's not to love about that?

1. Eye-popping styles and colors

There is a practical side to car restoration, like finding replacement parts and choosing drivable routes, but we can't deny the Model A is just *pretty*. Seriously, we could stare at this car all day.

With new sporty body-styling, the Model A was an instant hit. Millions of people stormed Ford showrooms on December 2, 1927 because, as an Irving Kaufman song of the time period claimed, "Henry's made a lady out of Lizzie." Well, we think Lizzie was always a lady, but the Model A undoubtedly brought some serious class to the early American auto scene, styled to look like "a baby Lincoln," and offered in an array of colors, contrasting with all those black Model Ts. For all his mechanical prowess, Henry Ford didn't have much of an eye for style, but his son Edsel gave the Model A body the elegant finesse



that we can't get over. And today, especially in the Motor City, taking a pleasure cruise in a piece of automobile history is really a special treat.

With the looks, the performance and doable restoration—it's no wonder we love the Model A so much! We can't wait to see the approximately 200 stunning, unique Model As driving the streets of Greenfield Village or

parked for up-close ogling during Old Car Festival this year. Join us this weekend and we can drool over wire wheels, and glossy colored fenders together.

- Sarah Kornacki
Media Relations Intern
The Henry Ford
September 4, 2014

2016 Old Car Festival
September 9-10, 2016

Terry finally decided to tie the knot with his long-time girlfriend. One evening, after the honeymoon, he was cleaning one of his Model A's for an upcoming show.

His wife was standing there at the bench watching him. After a long period of silence she finally speaks.

"Honey, I've just been thinking, now that we are married, maybe it's time you quit spending all your time out here in the garage and you probably should just consider selling your cars."

Terry gets this horrified look on his face.

She says, "Darling, what's wrong?"

Terry says, "There for a minute you were starting to sound like my ex-wife."

"Ex-wife!!! She screams, "YOU NEVER TOLD ME THAT YOU WERE MARRIED BEFORE!"

Terry's reply: "I wasn't."

Quiz answers. Care taken, but no responsibility for answers. Check NZ Road Code if in doubt.

1 50 milligrams. 2 20k. 3 Yes 4 No 5. 1metre 6 3m forward from the front edge of the front seat or 4 metres behind the rear axle. 7 100 meters 8 Yes, the headlights must light up the towing connection. 9 6 metres. 10 Right. 11 Yes.

Help us make *The Script* a success. We would be grateful for any material you feel could be appropriate to include in our Club's newsletter.

CLOSING DATE for copy for the next Script is 20 August 2017. Please send to the Editor, Wendy Genet afordscript@gmail.com. The views expressed in this magazine are personal opinions of those who contribute and do not necessarily represent the views or methodology of the Canterbury Chapter of the Model A Ford Club of America. Thanks goes to MAFC member magazines and web sites as well as other sources who supply material to our club which we reprint in the magazine.

CLUB CAR : Remember that the Club Phaeton is available for members to use. If your Model A is not mobile, give some thought to borrowing the Club car to join in one of our runs. Guidelines for its use are printed inside the back of the membership list.

Graham Evans (ph. 03 351 5919) is the custodian of the car and looks forward to your call requesting the use of the car.

ANTIQUÉ FORD PARTS

**THE MODEL 'A' SPECIALISTS
DEREK & JUDY THOMASON**

**492 MAIN ROAD HOPE, R.D.1,
RICHMOND, NELSON
PH / FAX: (03) 544 7826**

Email: antiqueford@xtra.co.nz

OPEN 7 DAYS if HOME

**Large range of new and original parts at
REALISTIC PRICES**

Early Ford Parts

Mufflers



Mufflers as per original design and shape.

Lock formed cone as original.

Original length and also long tail pipe version available

\$270.00 inc GST

- Over 1400 new Model A parts in stock
- Competitive prices on all Model A parts
- We also import larger items on indent. Air or sea

**GET A QUOTE BEFORE SELECTING YOUR
SUPPLIER!!!**

Early Henry Ford Parts

11 Henry Street

Ph 03 379 7370

After Hours 021 637 656

www.earlyfordparts.co.nz

earlyfordparts@xtra.co.nz

All prices include GST



SELWYN

St John

MOTOR FEST & FAMILY FUN DAY



Sunday 26 November

Selwyn car guys have banded together to hold an outdoor car, truck, motorcycle and farm equipment show at a central location opposite the new Rolleston College



CHECK US OUT ON



Selwyn Motor Fest

Sunday 26th November 2017.

It is hoped that there will be a 1,000 vehicles for display as a fund-raising family fun day event for Selwyn St John Ambulance.

Registration is only \$10 per vehicle.