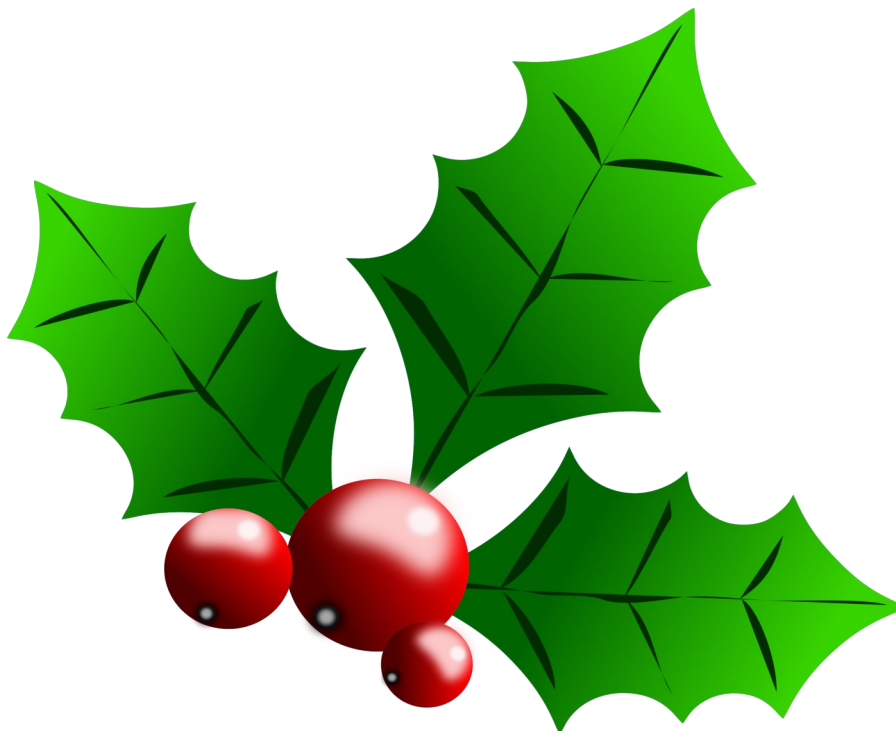


A Ford Script



Merry Christmas

Official Newsletter of THE MODEL "A" FORD CLUB OF AMERICA

Canterbury New Zealand Chapter. PO Box 4212 Christchurch

COMMITTEE

Club Captain	Graeme Scott	(03)384-8773
Vice Club Captain	David Dacombe	(03) 313-7341
Treasurer		
Secretary	Brent Miles	(03)349-8108

General Committee

Anne and Graham Evans		(03)351-5919
Glenn Birnie		(03)347-4849
Peter Bayler		(03) 313-7067
Pam Dacombe		(03)313-7341
Russell Genet		(03)329-9065
Lindsay and Annette Painter		(03)342-5247
Vaughan Morrison		021660762

Webmaster	Graeme Scott	(03)384-8773
Script Editor	Graham Evans	(03)351-5919
Club Car Custodian	Graham Evans	(03)351-5919

WEBSITE 'Model A Ford Club Canterbury'

Did you know our club has its own Website, type 'Model A Ford club Canterbury' into google. There are a number of pages of interest including all the Scripts from 2014 (able to be downloaded and/or printed), notes on future events as well as market place where free adds for members can be posted. Any questions or suggestions please contact Graeme Scott (webmaster) at scotts.belfast@xtra.co.nz

COVER. A little bit of Christmas Holly

CLUB CAPTAINS REPORT

Sadly this week we have learnt that Barrie Shipley passed away. He was a valued member of our club and has been the Club Treasurer for a number of years. He will be sorely missed, not just by the committee but everyone. He has organised many events, especially the quiz events, he would ask the most interesting questions that would have everyone guessing. Barrie and Barbara have been club members for a long time. We extend our heartfelt sympathy to Barbara and the family.

The Christmas function was held at Jagz, Kaiapoi on Saturday 23rd November. Eighteen people attended, some wearing era costume. A beautiful meal and lovely evening was enjoyed by all.

We still have two events to round off this year.

The children's Christmas Picnic, being held at the VCC Grounds at Cutler Park on 4th December, I hope everyone has advised Anne Evans of their intentions if they are bringing children or grandchildren.

The night trial is being held 14th December, look to the details in this Script.

Next year, our first event is the Era Picnic being held on 26th January, 2020, so mark this on your calendar.

As another year draws to a close, I wish you all a safe and enjoyable festive season.

Happy motoring

Vice Club Captain

David Dacombe



Barrie Ronald Shipley

9 January 1948 –20 November 2019

Obituary

Barrie Shipley

1948 –2019

There were a lot of wonderful things said about Barrie, as a Husband, Father, Pop and as a great friend. The Family had asked if some Model As could be displayed. It was great to see the cars lined up and parked outside.

To sum up this great man, we can share this poem, from the service sheet

Measure of a Man

By Grady Paulard

The measure of a man is not determined
By his show of outward strength
Or the volume of his voice
Or the thunder of his actions
Or his intellect or academic abilities
It is seen rather, in terms of his love
That he has for his family and for everyone
The strength of his commitment;
The genuineness of his friendships
The sincerity of his purpose;
The quite courage of his convictions
The fun, laughter, joy and happiness he gives
To his family and others,
His love of life; His patience and honesty;
And his contentment with what he has.

Barrie leaves a big hole in our club, and it is with grateful thanks that Barrie has been our Treasurer for many years.

Christmas Dinner

Jagz Restaurant November 23rd

PAST EVENT

18 club members enjoyed the occasion, with those in Fashion Era Dress being commented on by other restaurant diners. We enjoyed the Christmas Dinner with the offer of three mains and five deserts. The Era Dress was voted on for best man and best woman. Results while be revealed at the AGM Prize Giving.

After exchanging gifts we had the opportunity of mixing and catching up on members travels and happenings during the winter.



Article sent in by Russell Dowdle I recently came across your website and read several editions of the 'Script" including June 2015 where was a reference to my Dad and Sid Thew's christening run. I have several of Dads photos of the day and remember it quite well. So I have written a quick article for your magazine.

Christening Run for Gordon Dowdle - 1930 Phaeton & Sid Thew 1928 Phaeton, Sid and Gordon were neighbours and restored their cars together.

In 1969 I was 8 years old. According to an article in the June 2015 "Script" Dad and Sid Thew had their christening in December 1969 – so just 50 years ago!

I remember the occasion quite well, us kids, my sister Wendy and I were under strict orders that children should be seen and not heard. There were a lot of men looking at cars and enjoying morning tea provided by Mum (Daphne) and Eileen Thew. Then it was on to the first official drive, just a short run up to the Kaiapoi Domain for photos.



I'm sure your members can fill in the gaps or correct my memory.

Left to right

Les Pearson, ?, Ben Williams, Owen Hills, ?, Peter Keir, ?, ?, Sid Thew
(back to camera), Ian Smith, ?, ?, Ralf Edwards, Harry Barnes.

Sids car, later to become FJ 1928, and Dads car, later to become FS 1930.

Some of the facts as I remember them, The A took 3 years and \$300.00 to restore. Dad had purchased his car pretty complete so it was a reasonably easy restoration, Sids car however was a different story, it was originally his Fathers or Grandfathers car, so it had a strong family connection, however it had been converted to a truck or ute, as was quite common in the day. Model A's were everywhere and several wrecks were bought home to be used for parts.

There were several engine blocks laying in our back yard, Dad said they were all cracked! Mainly due to the lack of antifreeze and not draining the engines on frosty nights.

According to Mum, Sid bought his car first and Dad was so impressed that he bought one himself and they restored them together. Dad had served his apprenticeship at Greymouth Motors and so the mechanical work was easy for him, however he had never done body work or painting so these items were a challenge for him.



At the Kaiapoi Domain.



Dad on the left and Sid on the Right investigating another wreck.

Geraldine Weekend 13th 14th 15th March 2020

Programme

Friday 13th March evening.

Meet and Greet from 6.00 pm at Village Inn Hotel 41 Talbot Street, Geraldine (Range of mid price meals available, snacks, tea coffee) Order and pay there.

Menu link <http://www.villageinn.co.nz/images/documents/VILLAGE-Inn-Dinner-Menu-190627.pdf>

Saturday 14th.

9.00 am start, short run to Peel Forest. Meeting Mr John Acland for talk on Peel Forest history at the Green Man Café, range of coffee and cabinet food available.

Followed by run up Mesopotamia Valley. Lunch stop on the way. BYO lunch.

Saturday evening. From 6.00pm. Evening meal at Geraldine bowling Club. 45 Wright Street, cost \$35pp, which is walking distance from most places in Geraldine. Set menu, bar available.

There will probably be bowling club members there initially to chat to or help you with a “roll up” if you are interested. (This catering is a small profit fund raiser for the club)

Sunday.

9.15 start. Visit to Lillia’s Lace Museum. (In the town). Cost \$5.00 pp to be paid to Russell before visit please.

This is close by the car museum if anyone prefers that option.

Followed by a run to a shed visit. Lunch at the shed, BYO lunch then make your own way home.

There are a number of cafes in Geraldine to purchase lunch and supermarket hours are Saturday 7.00am -8.00 Sunday 7.00am-8.00pm

This includes the Saturday evening meal and donation to Mr Acland for upkeep etc of Mt Peel Church. (Bar available at evening meal)

For anyone interested in patchwork, the Geraldine Group is holding an at home camp in the St Johns Hall. Anyone welcome, from popping in to staying all day. Approx hours 9.00 am to 9.00pm.

If you are interested in joining them for an extended visit, contact me and I will give you the lady’s contact.

Please ring Russell or committee member with questions.

Russell Genet Ph 3299065 trip organiser.

CANTERBURY MODEL A CLUB INC

Geraldine Weekend

13th – 15th March 2020

REGISTRATION FORM

Driver:		
Passengers:		
Address:		
E-mail address:		
Phone number:	Mobile:	
Vehicle Body type	Registration No:	Year:

Saturday Day visit to Peel Forest	\$5.00 per person	\$ _____
Saturday Dinner	\$35.00 per person	\$ _____
Sunday Lace Visit optional \$5.00 to pay on the day		
		TOTAL \$ _____

PLEASE ADVISE ANY DIETARY NEEDS

Method of payment

Internet Banking number: 06-0805-0018320-000 **Reference:** Surname & Rego Number

E-mail form to: rwgenet@gmail.com

Cheque: Post to: Canterbury Model A Club, PO Box 4212, Christchurch 8140

Rally Director: Russell Genet – Phone: 03 3299065 or 027 6068550

COMING EVENTS

December 4th (Wednesday) Children's Christmas Picnic

VCC Grounds Cutler Park McLeans Island by Motor Cycle Area. From 5pm
Bring your own tea.

December 14th Night Trial. - Meet at Northwood Super Centre 7pm Bring food for
Potluck Dinner.

2020

January 26th Concours & Era Picnic. Meet at Rhodes Domain, Tai Tapu
around 12:00

**All interested parties for Concours, please contact Graham Evans
Ph 03 3515919 or email gaevans@xtra.co.nz**

February 16th Gymkhana.

March 13-14-15th Weekend in Geraldine (Refer details page 8 & 9)

April 19th Local Run

May 23rd Breakfast Run

June 20th Mid-Winter Dance

July 26th AGM

Condenser And Coil Problems.

Some possibilities that can occur are:

1. Blown or defective fuse (use of a fuse is an aftermarket item.)
2. Bad connections at ammeter, or ammeter itself (to find out put a jumper wire from one post of the terminal box to the other to take the ammeter out of the circuit temporarily.)
3. Bad ignition switch and/or cable, or loose cable connection at switch.
4. Loose or broken wires at bottom of coil.
5. Loose or broken wires inside terminal box.



6. Loose, bare or broken pigtail wire under distributor plate, or wire grounding to plate or distributor body
7. Points not opening, or point arm grounding to cam due to worn rubbing block.

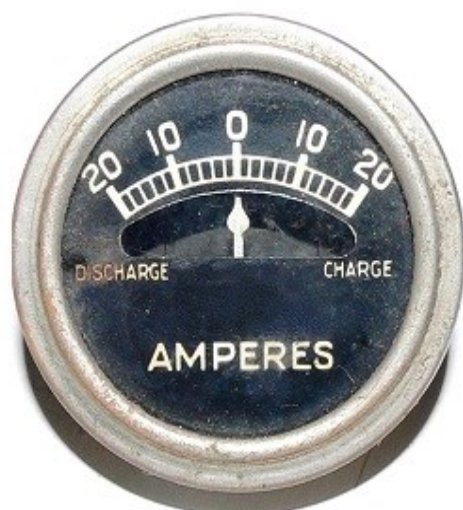


8. Worn electrode in underside of distributor cap.
9. Loose or broken high tension wire from coil to cap.

10. Condenser burned out or grounding (some condensers are too long and can touch the distributor body inside.)

11. Weak coil. Coils are also problematic at some temperatures.

12. Rotor not turning due to lose cam screw or bad timing gear.



Take out a volt meter

(A light bulb can give false readings).

Start at the fuse block, you should have voltage on both sides of the fuse. If you only have voltage on one side, replace the fuse of fuse block.

Now with voltage on both sides of the fuse, move up to the junction box. There should be voltage at both



terminals. If voltage is present only on one side the problem is at the ammeter and you should Jumper the ammeter for now.

You should have voltage on both sides of the coil. If not,

remove the red wire on the coil and check again. If you now have voltage on both sides, you have a problem further on. If the voltage is still only in one side you have a bad coil.

Open the points with a piece of paper and remove the condenser. Turn the key on and you should have voltage at the points.

Replace the condenser and you should still have voltage.

If voltage is missing, remove the top plate and check for voltage on the bottom plate.

Check is the connector from the ignition switch screwed in to far? Do you have voltage on the wire to the upper plate?

Is this wire shorting to ground or broken?

Are the points closing?

Hope this has been of some help.

Headnut.

CLUB CAR REPORT

The Club car has undergone extensive repairs to the front axle (king pins), front & back brake shoes, full set of replacement hubs, two new firestone tyres

The work is being carried out by committee members, with a huge thankyou to Lindsay Painter and Glen Birnie the car has a new WOF, and is now ready for members to loan.

Rushmore Motors (nz) Ltd.

Veteran, Vintage, Post Vintage & Classic Vehicle Marketing.

Over 60 vehicles on offer. Subscribe for a free monthly emailed catalogue. Listing is completely free. No hidden costs.

Ph. 027 22 45 045 Any time, or vintagecars@xtra.co.nz

Rushmore Motors Ltd do not buy and sell motor vehicles.

1 x 1928/29 steel headlamp in ex. cond. No dents, plus rim.
\$45.00.

1928/29 front bumpers with spacers. \$95.00

Gearbox in very good condition. Pictures and video available of the box during assembly. All original gears. No mixed gears. No repros. Choice of Main Drive Gear for single plate (A-7017-B) or for multiplate clutch (A-7107-AR) \$1000.00. |

B4 cylinder head and water-pump. (Pump has been welded on the side, but quite useable.) \$400.00.

Pictures of all parts can be emailed. (*A lot more to come next time.*)

ROBERTSON SCREWS

Suitable for the Model A and T Fords plus other
1920's—30's Canadian
built cars.



Email kandjstraw@gmail.com or
phone Kevin 0295-245-048



for details of all the various sizes available.

FOR SALE

Model A Ford Shock Absorbers rebuilt as exchange \$210 each, or \$240 outright.

Ph. Jack at 03-352-6672 ChCh. or 0274-322-041

WANTED

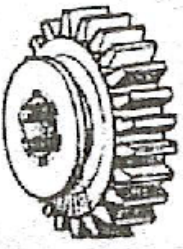
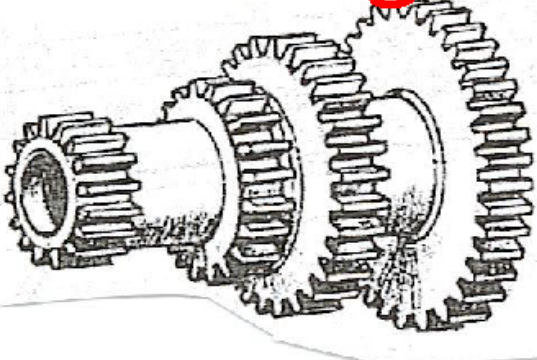
1930 Model A a straight chassis

Phone Vaughan Morrison Ph 021660762

Help us make The Script a success. We would be grateful for any material you feel could be appropriate to include in our Club's newsletter.

CLOSING DATE for copy for the next Script is 20 January 2020. Please send to the Editor, Graham Evans afordscript@gmail.com. The views expressed in this magazine are personal opinions of those who contribute and do not necessarily represent the views or methodology of the Canterbury Chapter of the Model A Ford Club of America. Thanks goes to MAFC member magazines and web sites as well as other sources who supply material to our club which we reprint in the magazine.

Model-A-gearbox upgrade.



Improved 2nd gear ratio by 15% to increase overall road speed in 2nd gear and hill climb ability without stress revving your engine.
With the installation of this new cluster and 2nd gear, this is all that is needed to achieve the effect desired i.e.: higher speeds in 2nd gear, making traffic driving and hill climbing not a problem.

COST
All new cluster and 2nd gear **\$1890.00 + P&P**

CONTACT
Errol or Linda McAlpine
On
1127 Scenic Drive
Swanson
Auckland 0614
New Zealand

PH (09) 8329818
MOBILE (0274) 543 983
EMAIL: vet.vin@xtra.co.nz
Web; www.veteranvintagecars.co.nz

CLUB CAR :

Remember that the Club Phaeton is available for members to use. If your Model A is not mobile, give some thought to borrowing the Club car to join in one of our runs. Guidelines for its use are printed inside the back of the membership list.

Graham Evans (ph. 03 351 5919) is the custodian of the car and looks forward to your call requesting the use of the car.

CANCELLATIONS : In the event of unsuitable or doubtful weather, cancellations or postponements will be emailed to you. We will be printing the run organiser in the coming events, please feel free to contact them or any of the Club committee members.

ANTIQUÉ FORD PARTS**THE MODEL 'A' SPECIALISTS
DEREK & JUDY THOMASON****492 MAIN ROAD HOPE, R.D.1,
RICHMOND, NELSON
PH / FAX: (03) 544 7826****Email: antiqueford@xtra.co.nz****OPEN 7 DAYS if HOME****Large range of new and original parts at
REALISTIC PRICES**

Veteran **AND** Vinfage

Spares and Repairs Ltd. - Model T & Model A

Ph: 09 8329818 or 027 4543983

Email: vet.vin@xtra.co.nz



**LUCAS
BLACKWALL
TYRES 19"**
475x500x19
\$310 each



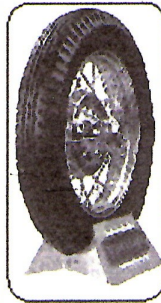
**LUCAS
BLACKWALL
TYRES 21"**
440x450x21
\$310 each



**LUCAS
BLACKWALL
TYRES 30x3¹/₂"**
\$ 453 each



**FIRESTONE
BLACK
TYRES 19"**
475x500x19
\$442 each



**FIRESTONE
BLACK
TYRES 21"**
440x450x21
\$442 each



**FIRESTONE
WHITEWALL
TYRES 19 OR 21"**
475x500x19
440x450x21
\$ 538.20 each

(Prices subject to change without notice)

Prices exclusive of GST ex Auckland

NO HIDDEN COSTS

Early Ford Parts

Muffler's



Muffler's as per original design and shape.
Lock formed cone as original
Original length and also long tail pipe version available

\$320.00 inc GST

- Over 2000 new Model A parts in stock
- Competitive prices on all Model A parts.
- We also import larger items on indent. Air or Sea.

**GET A QUOTE BEFORE SELECTING YOUR
SUPPLIER!!!**

Early Ford Parts
10 Grafton Street
Ph 03 379 7370
After Hours 021 637 656
www.earlyfordparts.co.nz
earlyfordparts@xtra.co.nz
All prices Include GST