

A Ford Script



December 2020 / January 2021

Official Newsletter of THE MODEL "A" FORD CLUB OF AMERICA

Canterbury New Zealand Chapter. PO Box 4212 Christchurch

COMMITTEE

Club Captain	David Dacombe	(03) 313-7341
Vice Club Captain	Peter Bayler	(03) 313-7067
Treasurer	Brent Miles	(03)349-8108
Secretary	Russell Genet	(03)329-9065

General Committee

Glenn Birnie	(03) 347-4849
Andre Kraenzlin	021 996-223
Kevin Mercer	021 716-845
Lyn Miles	(03)349-8108
Vaughan Morrison	021 660-762
John Olliver	(03) 359 6360
Lindsay and Annette Painter	(03)342-5247

Webmaster	Graeme Scott	(03)384-8773
Script Editor	Graham Evans	(03)351-5919
Club Car Custodian	Graham Evans	027 320-7948

WEBSITE 'Model A Ford Club Canterbury'

Did you know our club has its own Website, type 'Model A Ford club Canterbury' into google. There are a number of pages of interest including all the Scripts from 2014 (able to be downloaded and/or printed), notes on future events as well as market place where free adds for members can be posted. Any questions or suggestions please contact Graeme Scott (webmaster) at 'scotts.belfast.nz@gmail.com'

COVER. Christmas Dinner gathering

CLUB CAPTAINS REPORT

Hi Folks

November has been a busy month.

The Christmas party has been held and it is pleasing to hear that there was a good attendance. From comments that I have heard, it was well organised with beautiful food and a great time was had by all. Well done to Annette and Heather and their team for all the hard work involved. Pam & I are sorry we missed it.

The Garage raid was held last Saturday with a good turnout.

We started at Garth Moore's to see his 3 Model A's, 2 restored and 1 under restoration, plus a MG.

From there we went to Ken James to see his collection – 2 Model A's, 1 Triumph, 1 Mercedes and a Morris Commercial truck. Also tucked away in the corner of the garage was a James Motor bike.

We were then invited to go to Tim Eagles to see his other vehicles, 2 Datsuns, a Morris Minor and some Step Thru Motor Bikes plus a great selection of Pedal Cars.

It was then onto Graham Evans to see his garage, 2 Model A's, one restored and the other under restoration and a MG.

After Grahams visit, some went for refreshments and others headed home.

It was an interesting afternoon, and I hope that others will open their garages for future garage raids.

The children's Christmas picnic is being held at Cutler Park on Wednesday 9th December, even if you don't have grand children to bring, come along with your picnic tea and join in.

For everyone intending to go to the National Meet in Gisborne next year, the registration forms are now available.

I wish you all a Merry Christmas and a Happy New Year and hope to catch up with you all at our first event in the new year.

Happy & Safe Motoring during the holiday season.

David

2020

COMING EVENTS

December 9th **Children's Christmas Party - Cutler Park Motorcycle area**
If you have children/grandchildren 10 years and under, the club
will provide a present. Names, Age and Sex to Anne Evans
Ph 3515919 or cell 0274423758 by Tuesday Nov 17th

2021

January 31st **Era Picnic. Selwyn Huts Domain 12:00 pm (map on page 9)**

February 14th **Run and Gymkhana for Rex Chenery Trophy .**

Venue Andy Fox's Farm

Meet at the Belfast Peg Hotel 9:30am

March 7th **Hubley Race Practice**

March 28th—April 8th **National Meet in Gisborne**

For those who are going to the National, the committee is gathering the names and
dates, to help with contacts for when commuting, please contact Graham 0273207948
with your travel details

April 18th **High Country Run**

May **Night Trial**

June **Mid Winter Function**

Past Events— November

Christmas Dinner

This year the committee chose a spit roast for the meal, with Heather & Glen Birnie provided their home as the venue with help from Annette & Lindsay Painter, it was decided to vary the normal restaurant venue and opt for another variation. 31 members gathered to enjoy a very enjoyable mains and desert prepared by Annette and Heather .

We were blessed with the attendance from our Patron and foundation members Alan & Shirley Wills, along with Travis & Margaret Michelle who travelled North from Mosgiel to be with us .

It was a Christmas feeling, with a lucky name draw, Era Dress, and the exchange of gifts.

A big thankyou to Heather & Glen Birnie and Annette & Lindsay Painter for their skills and effort to make this event very memorable.

Annette's Quick Christmas Pudding. (printed on request)

In a pot put 1 3/4 cups mixed fruit 1 tb sp butter

1 cup milk, 3/4 cup brown sugar

Heat stirring constantly until boiling

Then turn off and let cool for about 30 minutes

Then add 1 tsp baking soda - mix well

Sift and add 1 cup wholemeal flour

1/4 tsp salt, 1 tsp mixed spice, 2 tsp brandy essence

Put into stainless steel bowl

Place bowl into saucepan that is 1/4 full of water. Do not cover bowl, but put lid on saucepan

Keep boiling at low to medium temperature, for 45-60 minutes.

Can cook and cool, cut into serving pieces & keep in freezer

Then use when required, serve with custard & cream.



Garage Raid

We arrived at Garth Moore's garage on Saturday at 1pm. As we watched the variety of members cars arriving we looked at Garth's collection of Model A's along with his latest restoration a 1930 Model A Roadster, all admiring the paintwork undertaken by Garth in this curtained garage. We also viewed some historic books and brochures Garth has collected.

By the time we moved on the Ken's we had built to 21 in numbers ,to see a Model A Woody under construction and a variation of other vehicles which Ken owns. It was good to read the history that Ken had researched on each vehicle

A visit to Tim's garage and house saw his collection of 120Y Datsun's, a very late model 1974 Morris Minor, several motor cycles and a variety of Pedal Cars.

We negotiated severe traffic congestion on routes to Graham's, where we viewed the 1930 Model A Delivery which has been under restoration for a number of years (36) and we are hoping to see this model on the road next year.



Garth's Garage



Ken's Garage





Tim's Pedal Cars



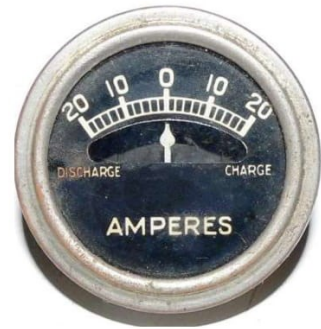
Graham's Garage

READING THE AMMETER SCALE

1. No movement of the pointer with the ignition key turned "on" and the engine is being started or a steady "Discharge" reading. Engine fails to start.
2. No "Charge" reading while the engine is running or idling rapidly to normally allow the generator to produce charging current for the battery.
3. The pointer indicates full "Discharge" when an electrical circuit is turned "on".
4. The pointer indicates an abnormal "Discharge" with the engine idling or stopped.
5. A small "Discharge" reading is indicated with the engine running rapidly, increasing with the use of lights or horn.
6. No "Charge" reading with the engine running rapidly, followed by intermittent "Charge" readings on the ammeter scale.
7. The engine cuts out intermittently or stops after running a short time with fluctuations of the pointer on the ammeter scale.

WHAT TO LOOK FOR

1. With ignition current flowing through the ammeter, the pointer should fluctuate as the engine is being turned over, indicating the ignition breaker points are interrupting the flow of current in the primary ignition circuit. See that the key is turned "on". Check the ignition breaker points to see that they open and close as the engine is cranked. Check for loose connections at the ignition coil terminals, junction box terminals and the ignition switch. If a normal "Discharge" reading is indicated when the lights are turned "on" and the starter motor operates normally, the possibility of loose battery or starter switch terminals is not too likely. A small steady "Discharge" reading might indicate ignition breaker points that fail to open, a completely "shorted" ignition condenser or a "short" at the flexible wire between the plates inside the distributor body.



2. An open generator circuit, possibly a broken wire in the generator, brushes failing to seat on the commutator bars, open generator windings or a loose output terminal. Failure of the cut-out contacts to close. The latter may be checked with a "jumper wire", connected to each cut-out terminal. If the ammeter indicates "Charge" at a fast engine idle, cut-out failure is indicated. In an emergency, the "jumper wire" may be left in place across the cut-out terminals. The "jumper wire" must be removed when the engine is stopped to prevent generator failure. If no reading is seen, replace the generator.

3. The ammeter indicates full "Discharge". Cut-out contacts fail to open, disconnect either terminal on the cut-out as the battery will discharge through the generator burning it out. A possible "short" in the instrument panel, main wiring harness or lamp housings. Turn all switches "off". If the "short" is still present as indicated by the ammeter or smoke from wiring, disconnect the battery cable at the grounded end. In case of a real emergency, disconnect the battery cable at the starter switch terminal or cut the wire running from the starter terminal to the junction box. To locate the "short", disconnect suspected electrical circuits, unplug headlights one at a time, tail lamp plugs, horn wires, instrument panel wires, etc. As each circuit is disconnected, touch the battery cable to the battery post, if a spark is seen, the short is still present. All switches must be "off". Make a visual check for burnt wiring also.

4. Check the generator cut-out contacts for failure to open.

5. The generator is not connected to the battery circuit due to loose connections or cut-out failure.

Possible generator failure or a broken fan belt. If the fan belt breaks, engine temperature will rise. These two indications will say "Broken Fan Belt" without raising the hood!

6. Cut-out contact may be too great, resulting in the opening and closing of the cut-out contacts as the generator output varies with engine speed.

7. Loose terminals at the ammeter or inside the junction box. Tighten the ammeter stud nuts after the wires are removed. Then tighten the nuts for the terminals of the wires firmly. Lock washers will help keep connections tight. Feel the instrument panel around the ammeter, loose connections create heat, indicating trouble at the ammeter. This is a common source of trouble that is easily overlooked.



Conclusion

Learn to read the ammeter scale when everything is normal. This will be very helpful in reading the ammeter scale when things are abnormal.

At times the problem is not the cut out. It could be an out of round commutator or a weak brush spring. I would remove the armature and clean and under-cut the mica between the segments on the commutator. I would check the brush components for fit and looseness. Anything that can set up a bounce between the brushes and the commutator will cause fluctuation of the ammeter needle. You could first try holding slight pressure on the brushes, one at a time while the engine is running, this will sometimes allow the brush to wear into the commutator for a better smoother fit. Any roughness between the brush and the commutator can set up a bounce that will cause the needle on the ammeter to jump a bit.



Headnut.

Gisborne Rally 2021 Registration Form (see separate attachment)

Registration Forms, along with a Merchandise Order Form, Indemnity Form and Judging Form. Have been sent out.

These do need to be completed in their entirety and returned before January 31 2021. There will be a late entry fee of \$100 after this date. FUNCTIONS: We will be having three main evening functions. Mr Graham Williams will be our MC for all evening functions and we thank him for coming onboard and jollying the nights along. WELCOME EVENING - Monday 29 March. The Rally will be officially opened by Gisborne's Mayor Rehette Stoltz followed by a Waiata and Kapa Haka Performance by one of the local schools. A three-course buffet meal will commence after this performance along with a cash bar.

Attire for this evening is smart casual. HOE DOWN - Wednesday 31 March. With Gisborne being known for its laidback country lifestyle, it seemed appropriate to include a Hoe Down. This will be a fun packed evening with variety and entertainment. We ask that you wear your country outfits and help create a fun down to earth atmosphere. There will be a three-course buffet meal and cash bar. There may also be a few surprises!! FAREWELL & AWARDS NIGHT - Saturday 03 April. A night where we can all join to celebrate a week of full-on activity and another National Rally under our belts. Celebrate the winners and encourage those that did not quite make it this time. A three-course buffet meal will be served, a cash bar available and entertainment also. Era costume would be preferred but not essential.

The cut-off date is January 31st 2021, after this date there will be a late fee charged of \$100. If you do pay your monies and we end up having to cancel the event due to COVID-19 all your monies will be refunded. If anyone has questions please do not hesitate to contact one of the team and we will be sure to assist.

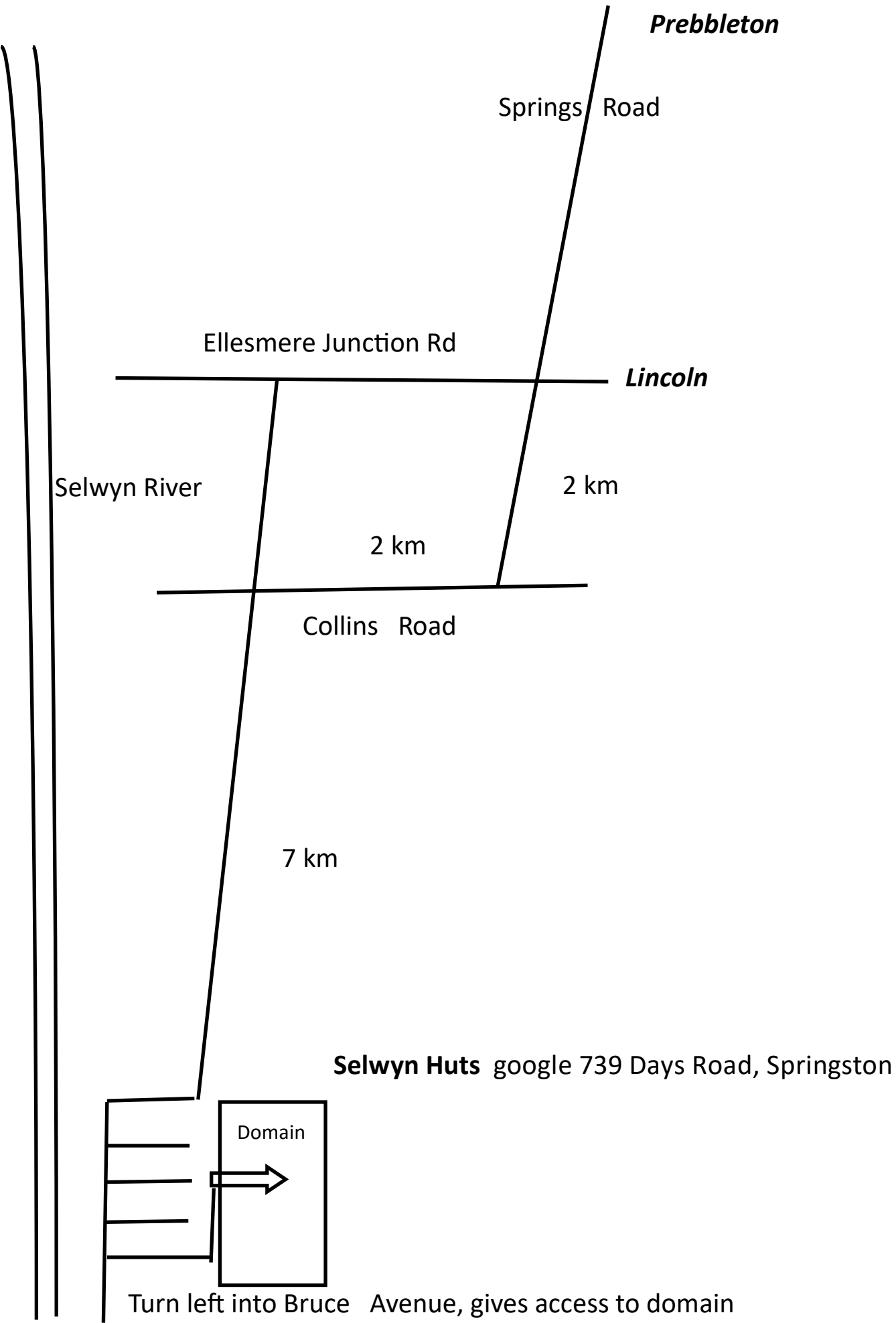
MERCHANDISE: All our merchandise is being supplied by Robert Embroideries from Palmerston North. Nicky Robert has been amazing to deal with and we thank her for all the work she has done in bringing this selection to you. They have also embroidered our Rally badges which are on sale for \$20. The folding bamboo table was added as a bonus as these small tables are ideal for carrying around in the car, easy to fold away and pack into the pouch. The table will have the Rally logo etched onto the top as a reminder of this great wine loving district.

ACCOMMODATION: This is a reminder that if you are attending the rally please do not delay booking your accommodation. This is your responsibility and we wouldn't want you to miss out because you couldn't find a bed. If any participants do encounter issues please contact us so we can try to assist.

For official form please contact:

Karen Thomas Secretary 15th National Model A Ford Rally Gisborne 2021 Organising Committee – David Mossman, 0272 350 444; Rob Brown, 027 474 5726; Errol McAlpine, 027 454 3983; Tony Bartlett, 027 272 5648; Karen Thomas, 027 419 0191; Kristina Rarere 022 367 5776 or email gisbornemodelafordrally@gmail.com

Era Picnic. Selwyn Huts Domain Map - January 31st 2021



FOR SALE

1929 Model A Fordor. Original condition with original papers has only done 82,000 miles Price \$28,000

Please contact Andre 021 996 223 or email lunatigs@hotmail.com



WANTED

1 x Crank handle for Model A

Please contact Andre 021 996 223 or email lunatigs@hotmail.com

Rushmore Motors (NZ) Ltd.

Veteran, Vintage, Post Vintage & Classic Vehicle Marketing.

Over 50 vehicles on offer. Subscribe for a free monthly emailed catalogue. Be first to know. Listing is completely free. No hidden costs.

027 22 45 045 OR rushmoremotors@xtra.co.nz

Rushmore Motors Ltd do not buy and sell motor vehicles.

Wanted. For farm hack. Two required.

Any year Closed Cab pickup. Can be made from a cut down Sedan body. Needs no registration or wof. Deck can be wooden. Any condition considered.

For Sale.

1930 Model 'A' Gearbox. All original gears from one set i.e. no mixture of gears. Nickel plated gear lever and handbrake. All castings painted appropriate colour. Exceptional original unworn condition. Pictures and video available of all parts and assembly.

ROBERTSON SCREWS

Suitable for the Model A and T Fords plus other
1920's—30's Canadian
built cars.



Email kandjstraw@gmail.com or
phone Kevin 0295-245-048



for details of all the various sizes available.

FOR SALE

Model A Ford Shock Absorbers rebuilt as exchange \$210 each, or \$240 outright.

Ph. Jack at 03-352-6672 ChCh. or 0274-322-041

CLUB CAR REPORT

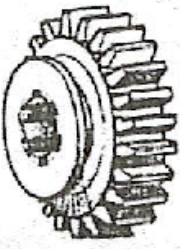
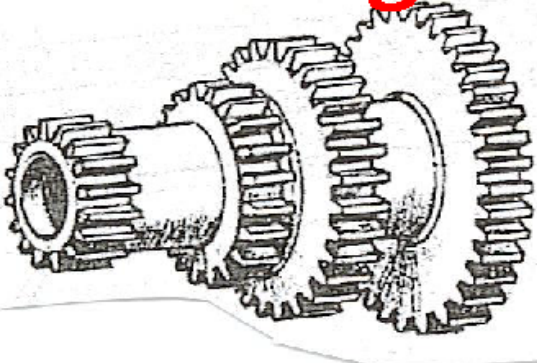
The club car is now fitted with LED indicators Thanks to Garth Moore & Peter Bayler
Also has current Rego & WOF

If you have your car unserviceable for a run, you can book the car by calling
Graham on 3515919 or 0273207948

Help us make The Script a success. We would be grateful for any material you feel could be appropriate to include in our Club's newsletter.

CLOSING DATE for copy for the next Script is 20 November 2020. Please send to the Editor, Graham Evans afordscript@gmail.com. The views expressed in this magazine are personal opinions of those who contribute and do not necessarily represent the views or methodology of the Canterbury Chapter of the Model A Ford Club of America. Thanks goes to MAFC member magazines and web sites as well as other sources who supply material to our club which we reprint in the magazine.

Model-A-gearbox upgrade.



Improved 2nd gear ratio by 15% to increase overall road speed in 2nd gear and hill climb ability without stress revving your engine.
With the installation of this new cluster and 2nd gear, this is all that is needed to achieve the effect desired i.e.: higher speeds in 2nd gear, making traffic driving and hill climbing not a problem.

COST
All new cluster and 2nd gear **\$1890.00 + P&P**

CONTACT
Errol or Linda McAlpine
On
1127 Scenic Drive
Swanson
Auckland 0614
New Zealand

PH (09) 8329818
MOBILE (0274) 543 983
EMAIL: vet.vin@xtra.co.nz
Web; www.veteranvintagecars.co.nz

CLUB CAR :

Remember that the Club Phaeton is available for members to use. If your Model A is not mobile, give some thought to borrowing the Club car to join in one of our runs.

Guidelines for its use are printed inside the back of the membership list.

Graham Evans (ph. 03 351 5919) is the custodian of the car and looks forward to your call requesting the use of the car.

CANCELLATIONS : In the event of unsuitable or doubtful weather, cancellations or postponements will be emailed to you.

We have printed the annual run organiser for the coming events in this script.

ANTIQUE FORD PARTS**THE MODEL 'A' SPECIALISTS
DEREK & JUDY THOMASON****492 MAIN ROAD HOPE, R.D.1,
RICHMOND, NELSON
PH / FAX: (03) 544 7826****Email: antiqueford@xtra.co.nz****OPEN 7 DAYS if HOME****Large range of new and original parts at
REALISTIC PRICES**

Veteran AND Vinlage

Spares and Repairs Ltd. - Model T & Model A

Ph: 09 8329818 or 027 4543983

Email: vet.vin@xtra.co.nz



**LUCAS
BLACKWALL
TYRES 19"**

475x500x19
\$310 each



**LUCAS
BLACKWALL
TYRES 21"**

440x450x21
\$310 each



**LUCAS
BLACKWALL
TYRES 30x3½"**

\$453 each



**FIRESTONE
BLACK
TYRES 19"**

475x500x19
\$442 each



**FIRESTONE
BLACK
TYRES 21"**

440x450x21
\$442 each



**FIRESTONE
WHITEWALL
TYRES 19 OR 21"**

475x500x19
440x450x21
\$538.20 each

(Prices subject to change without notice)

Prices exclusive of GST ex Auckland

NO HIDDEN COSTS



Muffler's



Muffler's as per original design and shape.
Lock formed cone as original
Original length and also long tail pipe version available

\$320.00 inc GST

- Over 2000 new Model A parts in stock
- Competitive prices on all Model A parts.
- We also import larger items on indent. Air or Sea.

**GET A QUOTE BEFORE SELECTING YOUR
SUPPLIER!!!**

Early Ford Parts
10 Grafton Street
Ph 03 379 7370
After Hours 021 637 656
www.earlyfordparts.co.nz
earlyfordparts@xtra.co.nz
All prices Include GST