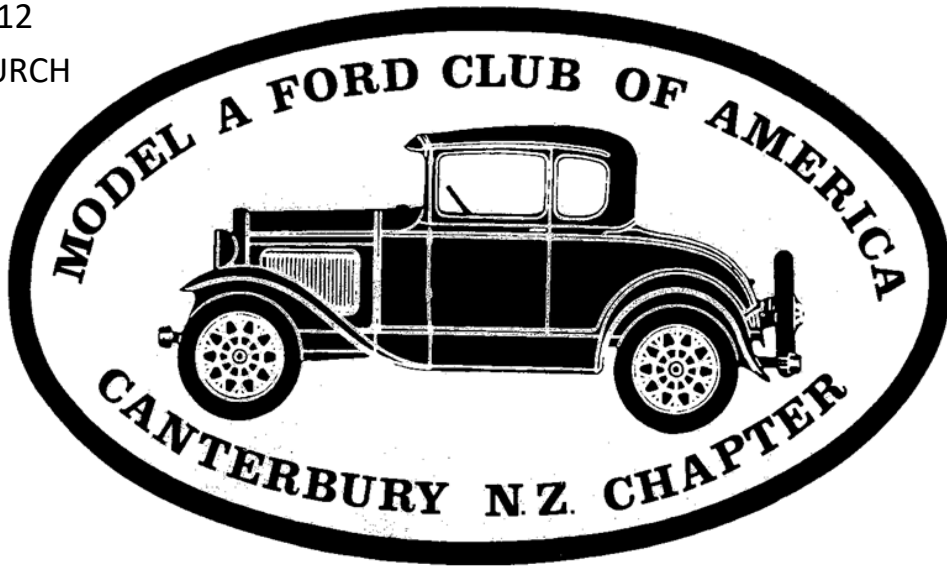


PO BOX 4212  
CHRISTCHURCH



# *A Ford Script*



FEBRUARY 2018

# A Ford Script

Official Newsletter of THE MODEL "A" FORD CLUB OF AMERICA

Canterbury New Zealand Chapter. PO Box 4212 Christchurch

## COMMITTEE

**Acting Club Captain** Graeme Scott (03)384-8773

Vice Club Captain

Treasurer Barrie Shipley (03)383-4640

Secretary Brent Miles (03)349-8108

## General Committee

Anne and Graham Evans (03)351-5919

Glenn Birnie (03)347-4849

Pam and David Dacombe (03)313-7341

Russell Genet (03)329-9065

Lindsay and Annette Painter (03)342-5247

Bruce Miles 0272389692

**Webmaster** Graeme Scott (03)384-8773

**Assistant Webmaster** Ken James (03)980-0547

**Script Editor** Graham Evans (03)351-5919

**Club Car Custodian** Graham Evans (03)351-5919

## WEBSITE

Did you know our club has its own Website, type 'Model A Ford club Canterbury' into google. There are a number of pages of interest including all the Scripts from 2014 (able to be downloaded and/or printed), notes on future events as well as market place where free ads for members can be posted. Any questions or suggestions please contact Graeme Scott (webmaster) at '[scotts.belfast@xtra.co.nz](mailto:scotts.belfast@xtra.co.nz)'

COVER . Children's Christmas Picnic at the Groyes

## CLUB CAPTAIN'S REPORT

Acting Club Captain Graeme Scott

A number of events have occurred over the Christmas break, dominated by the tragic and untimely passing of our dear friend and enthusiastic club member Rosalie Bayler.

Peter has asked me to temporarily take over his duties as Club Captain allowing him both time and space to come to terms with his life ahead without Rosalie.

Taking Club events in chronological order. Firstly the Club car again featured in the annual Christmas parade thanks to Graham Evans who gave his time to both organise and drive the Club car in that event.

This was followed by the children's Christmas party at the Groyne which proved popular for both the grandchildren and grandparents/parents alike. The highlight being Father Christmas arriving in Peter's newly restored pristine '28 Phaeton to distribute the presents to the young ones. Thank you to Pam Dacombe for organising this.

Next came our Christmas breakfast at Hartnell's, Prebbleton. This event was well supported and generated lots of fun and noise as we opened our '\$5' presents, many thanks go to Annette for organising this for us.

With 2017 behind us we were looking forward to a positive and 2018 ahead. Sadly, this was not to be as we learnt of Rosalie's sudden passing on Saturday January 20<sup>th</sup>. Many of us were privileged to know Rosalie as a true friend. A lady of many talents, boundless energy which she generously gave in supporting Peter and our Club in all areas. Rosalie's lovely smile and welcoming nature ensured no-one, in any organisation she was part of, ever felt left out or unwelcome.

A truly amazing lady who will be sadly missed and our thoughts are with Peter and his family at this difficult time.



Rosalie's funeral was held at Rangiora and fittingly was a huge affair attended by over three hundred mourners representing the various groups she was part of, each paying their own tribute. In our case we had twenty members 'A's' form a backdrop to the service (neatly aligned thanks to Dave Dacombe and his team of marshals'), complimenting Peter's two cars that were placed at the entrance to the chapel.

The verbal tribute given by Garth Moore. My thanks (again) to Garth for representing us at such an emotional time as well as all the members who attended in their polished and pristine 'A's', each paying their own tribute.

## CLUB CAR REPORT

Santa Parade included the club car carrying “Banana & Pyjamas” Write up and picture featured in Past Events.

Mariel Hill’s Granddaughter's Wedding - Used to transport Maid of Honour and Bridesmaids to Langdowns Winery where the Wedding ceremony and reception were held.



Displayed with other Model A’s at Rosales's Funeral

Maintenance:

Adjustment made to accelerator link to avoid touching break pedal under braking.

## EDITORS NOTE

I would like to remind members that this is your magazine, and articles, photos and members profiles are most welcome. Send info to email [afordscript@gmail.com](mailto:afordscript@gmail.com)

Please consider providing the script with your input, any suggestions on anything relating to Model A’s.

Regards Graham

### **NEXT COMMITTEE MEETING:**

Next committee meeting is 7.30pm, **Tuesday 20th February, 2018,**  
at Graeme & Marlene Scott’s 18 Rockview Place, Mount Pleasant.

If you have any matters you would like raised, please contact a committee member before this date.

## COMING EVENTS

### Sunday February 25th

Short local run with picnic lunch, starting at 10am from the Bishopdale Mall car park outside Super Market. Entrance of Harewood Road

## PAST EVENTS

**November 25th** The Club car maintenance was postponed pending a test drive with Dave Bell and Brent, which failed to replicate any issues with the gearbox. It was suggested that in the interim that maintenance would be curtailed until a repeat occurred. It was felt that it wasn't a safety issue and dismantling would disable the car for a period. It has two bookings for members prior to the end of January.

**December 3rd** 71<sup>st</sup> SANTA PARADE. Sponsored by Multimedia.

The event was a very warm day, I was linked up to carry Banana and Pyjamas, in the club car and John Olliver carried the Wizard. John & Sandra picked up the Wizard from his home in Avonside and I meet up with Banana and Pyjamas at Kirkwood Intermediate.

The parade consisted of 126 floats and started at 2pm. Being car number 14, I deliberately stayed at Kirkwood until 1:45 as the costumes for the two I carried were extremely warm.

We meandered down Riccarton Road from Wharanui Road to Travenos where I dropped off my team and returned the costumes to Kirkwood Intermediate.



December 6th

Children's Christmas party at the Groynes.



**December 10th**     Christmas Breakfast at the Hartnells.

26 Model Aers attended the Christmas breakfast in Prebbleton. After an enjoyable breakfast and lots of interchange, the secret Santa gifts were disturbed, with everyone excited to be opening their surprises.

The exceptionally good door prize was won by Graham & Anne Evans.  
and Refreshments.



FOR SALE

100's of "Model A News" and "Restorers" for sale most still there from the mid 70's thru to 2014. Only \$3.00 each or 5 for \$12.00. Be quick....Kevin Straw 03-338-3686.

# ROBERTSON

## SCREWS



**Suitable for the Model A  
and T Fords plus other  
1920's—30's Canadian  
built cars.**



### Model A Parts For Sale

- 2 x 19" Wheels @ \$70 each  
1 x 21' wheel @ \$70  
1 x 1930 Bonnet complete \$100  
1 x set of guards (repairable) \$100 each  
2 x 19" 500x19 New re-treads \$170 each  
Or with new tubes only \$320 for the pair  
1 x 1930 wooden Windscreen (good conditions—needs glass) \$50  
2 x Front Axles Offers  
2 x Diff & parts Offers  
5 x Heads need crack testing Offers  
Front & Rear springs Offers  
1 x Motor (needs reconditioning) Offers  
1 x Fly wheel & clutch Offers  
1 x towbar Offers  
Terry Buchanan Phone 03 4343199, cell 027 6156299





While the Model T dominated the auto industry from 1908 to the early 1920s, by the middle of the decade there was fierce competition from other automakers. After the 15 million Model T drove off the assembly line on 26<sup>th</sup> May 1927, Ford closed all plants over the world to spend 6 months retooling factories and perfecting the design of a new car.

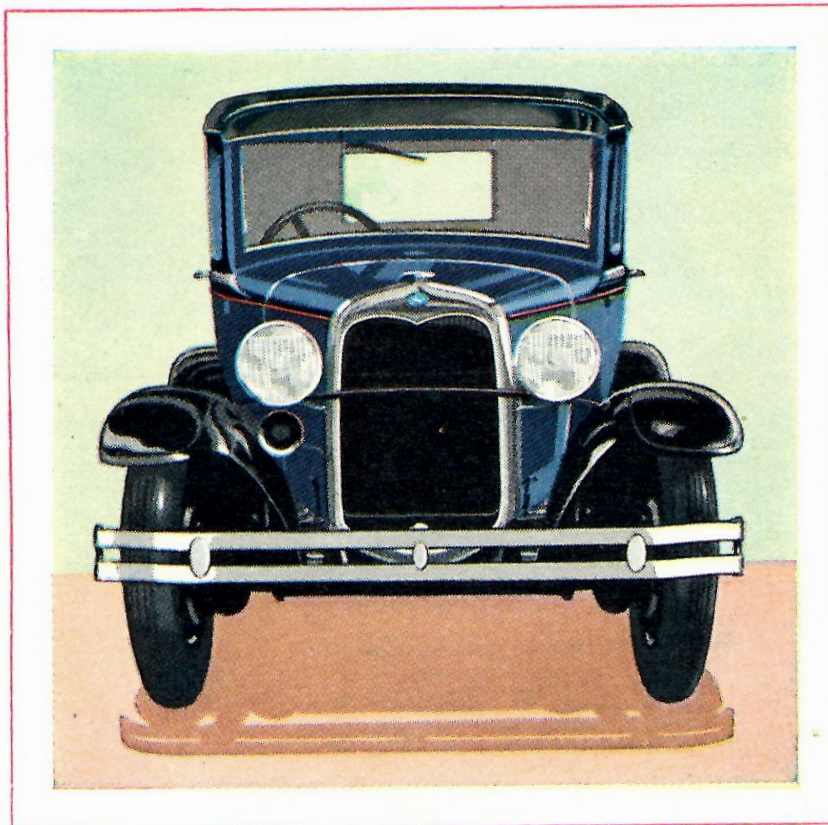
Ford called the new car the Model A, commemorating Ford Motor Company's first car, the 1903 Model A. The car was the first vehicle to sport the icon Blue Oval logo, and it included innovative features like a safety glass windscreen.

By 1931 Ford had sold over five million Model As despite the difficulties of the Great Depression.

The Model A came in a wide variety of styles including a Coupe (Standard and Deluxe), the Business Coupe, Sport Coupe, Roadster Coupe (Standard and Deluxe), Convertible Cabriolet, Convertible Sedan, Phaeton (Standard and Deluxe), Tudor Sedan (Standard and Deluxe), Town Car, Fordor (2-window) (Standard and Deluxe), Fordor (3-window) (Standard and Deluxe), Victoria, Town Sedan, Station Wagon, Taxicab, Truck, and Commercial

The very rare Special Coupe started production around March 1928 and ended mid-1929.

**FORDSCRIPT** If we have it wrong and are posting you hardcopy when you would prefer it emailed or vice versa or you know someone who should be getting a Script and isn't, please let us know. Either give us a call, 3515919 or email [afordscript@gmail.com](mailto:afordscript@gmail.com)



## WANTED

### Tyres

450-475 x 21" NZ Firestone in excellent condition

**Rear vision mirror** 4in dia. with rear swivel attachment

John Olliver Ph. 3596360



## SUBSCRIPTIONS

If you have not paid your 2017/18 Subscription.

Please action as soon as possible.

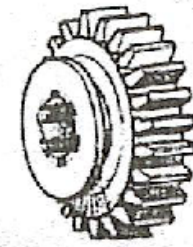
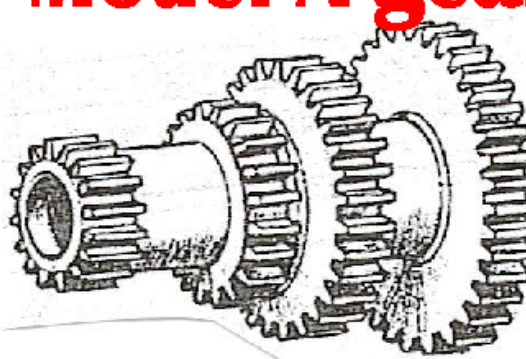
## Do You Know the Model A?

### The Power Plant

1. What is the weight of the Model A engine, complete with clutch and transmission?
2. What is the crankcase lubrication capacity?
3. What is the torque of the Model A engine? At what speed?
4. What is the weight of the flywheel?
5. What is the firing order?
6. What is the bore and stroke?
7. What is the piston displacement?
8. What is the actual brake horsepower?
9. What is the S. A. E. rating?
10. What type of fan is used?

*Answers in March Script*

# Model-A-gearbox upgrade.



Improved 2nd gear ratio by 15% to increase overall road speed in 2nd gear and hill climb ability without stress revving your engine.  
With the installation of this new cluster and 2nd gear, this is all that is needed to achieve the effect desired i.e.: higher speeds in 2<sup>nd</sup> gear, making traffic driving and hill climbing not a problem.

**COST**  
All new cluster and 2<sup>nd</sup> gear **\$1890.00 + P&P**

**CONTACT**  
Errol or Linda McAlpine  
On  
1127 Scenic Drive  
Swanson  
Auckland 0614  
New Zealand

PH (09) 8329818  
MOBILE (0274) 543 983  
EMAIL: [vet.vin@xtra.co.nz](mailto:vet.vin@xtra.co.nz)  
Web; [www.veteranvintagecars.co.nz](http://www.veteranvintagecars.co.nz)

Help us make *The Script* a success. We would be grateful for any material you feel could be appropriate to include in our Club's newsletter.

CLOSING DATE for copy for the next Script is 20 January 2018. Please send to the Editor, Graham Evans [afordscript@gmail.com](mailto:afordscript@gmail.com). The views expressed in this magazine are personal opinions of those who contribute and do not necessarily represent the views or methodology of the Canterbury Chapter of the Model A Ford Club of America. Thanks goes to MAFC member magazines and web sites as well as other sources who supply material to our club which we reprint in the magazine.

CLUB CAR : Remember that the Club Phaeton is available for members to use. If your Model A is not mobile, give some thought to borrowing the Club car to join in one of our runs. Guidelines for its use are printed inside the back of the membership list.

Graham Evans (ph. 03 351 5919) is the custodian of the car and looks forward to your call requesting the use of the car.

## **ANTIQUÉ FORD PARTS**

**THE MODEL 'A' SPECIALISTS  
DEREK & JUDY THOMASON**

**492 MAIN ROAD HOPE, R.D.1,  
RICHMOND, NELSON  
PH / FAX: (03) 544 7826**

**Email: [antiqueford@xtra.co.nz](mailto:antiqueford@xtra.co.nz)**

**OPEN 7 DAYS if HOME**

**Large range of new and original parts at  
REALISTIC PRICES**

# Veteran **AND** Vintage

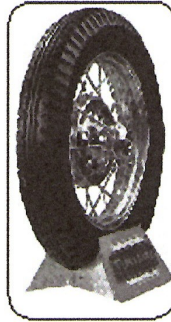
Spares and Repairs Ltd. - Model T & Model A

**Ph: 09 8329818 or 027 4543983**

**Email: vet.vin@xtra.co.nz**



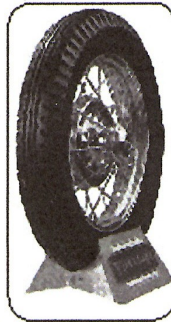
**LUCAS  
BLACKWALL  
TYRES 19"**  
475x500x19  
\$220 each  
or \$214 (x4 tyres each)



**FIRESTONE  
BLACK  
TYRES 19"**  
475x500x19  
\$334 each  
or \$328 (x4 tyres each)



**LUCAS  
BLACKWALL  
TYRES 21"**  
440x450x21  
\$220 each  
or \$214 (x4 tyres each)



**FIRESTONE  
BLACK  
TYRES 21"**  
440x450x21  
\$334 each  
or \$328 (x4 tyres each)



**LUCAS  
BLACKWALL  
TYRES 30x3 $\frac{1}{2}$ "**  
\$282 each  
or \$276 (x4 tyres each)



**FIRESTONE  
WHITEWALL  
TYRES 19 OR 21"**  
475x500x19  
440x450x21  
\$389 each

(Prices subject to change without notice)

**Prices exclusive of GST ex Auckland**

## **NO HIDDEN COSTS**

# Early Ford Parts

## Mufflers



Mufflers as per original design and shape.

Lock formed cone as original.

Original length and also long tail pipe version available

**\$270.00** inc GST

- Over 1400 new Model A parts in stock
- Competitive prices on all Model A parts
- We also import larger items on indent. Air or sea

**GET A QUOTE BEFORE SELECTING YOUR  
SUPPLIER!!!**

Early Henry Ford Parts

11 Henry Street

Ph 03 379 7370

After Hours 021 637 656

[www.earlyfordparts.co.nz](http://www.earlyfordparts.co.nz)

[earlyfordparts@xtra.co.nz](mailto:earlyfordparts@xtra.co.nz)

All prices include GST