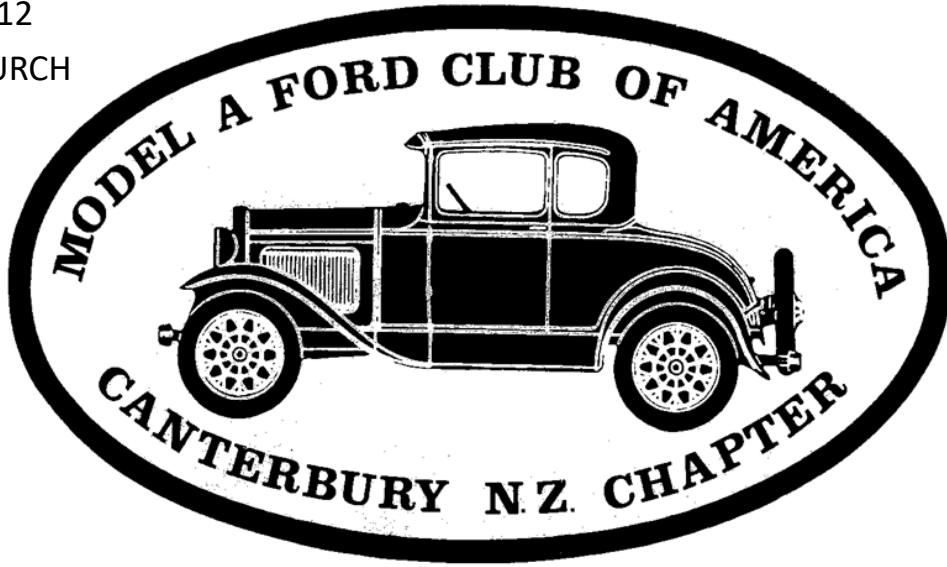


PO BOX 4212
CHRISTCHURCH



A Ford Script



July 2018

A Ford Script

Official Newsletter of THE MODEL "A" FORD CLUB OF AMERICA

Canterbury New Zealand Chapter. PO Box 4212 Christchurch

COMMITTEE

Club Captain	Peter Bayler	(03) 313-7067
Vice Club Captain	Graeme Scott	(03)384-8773
Treasurer	Barrie Shipley	(03)383-4640
Secretary	Brent Miles	(03)349-8108

General Committee

Anne and Graham Evans		(03)351-5919
Glenn Birnie		(03)347-4849
David Dacombe		(03) 313-7341
Pam Dacombe		(03)313-7341
Russell Genet		(03)329-9065
Lindsay and Annette Painter		(03)342-5247
Bruce Miles		0272389692
Webmaster	Graeme Scott	(03)384-8773
Assistant Webmaster	Ken James	(03)980-0547
Script Editor	Graham Evans	(03)351-5919
Club Car Custodian	Graham Evans	(03)351-5919

WEBSITE

Did you know our club has its own Website, type 'Model A Ford club Canterbury' into google. There are a number of pages of interest including all the Scripts from 2014 (able to be downloaded and/or printed), notes on future events as well as market place where free adds for members can be posted. Any questions or suggestions please contact Graeme Scott (webmaster) at 'scotts.belfast@xtra.co.nz'

COVER. Irishmans Rally—Just some of the 70 Model As in the total of 160 vintage cars

CLUB CAPTAIN'S REPORT

Hi fellow members of the Model A Club. This is my final club captains report, as I am stepping down from this position. Please give consideration to standing for the committee yourself if asked or volunteer yourself, as new people bring new and exciting ideas and keep our club vibrant. On Queens Birthday weekend the Straw family and myself went to Ferrymead open day to show the Model A flag and promote our club. Unfortunately the weather was unkind, but we made a lot of peoples day by giving them a ride in an A.

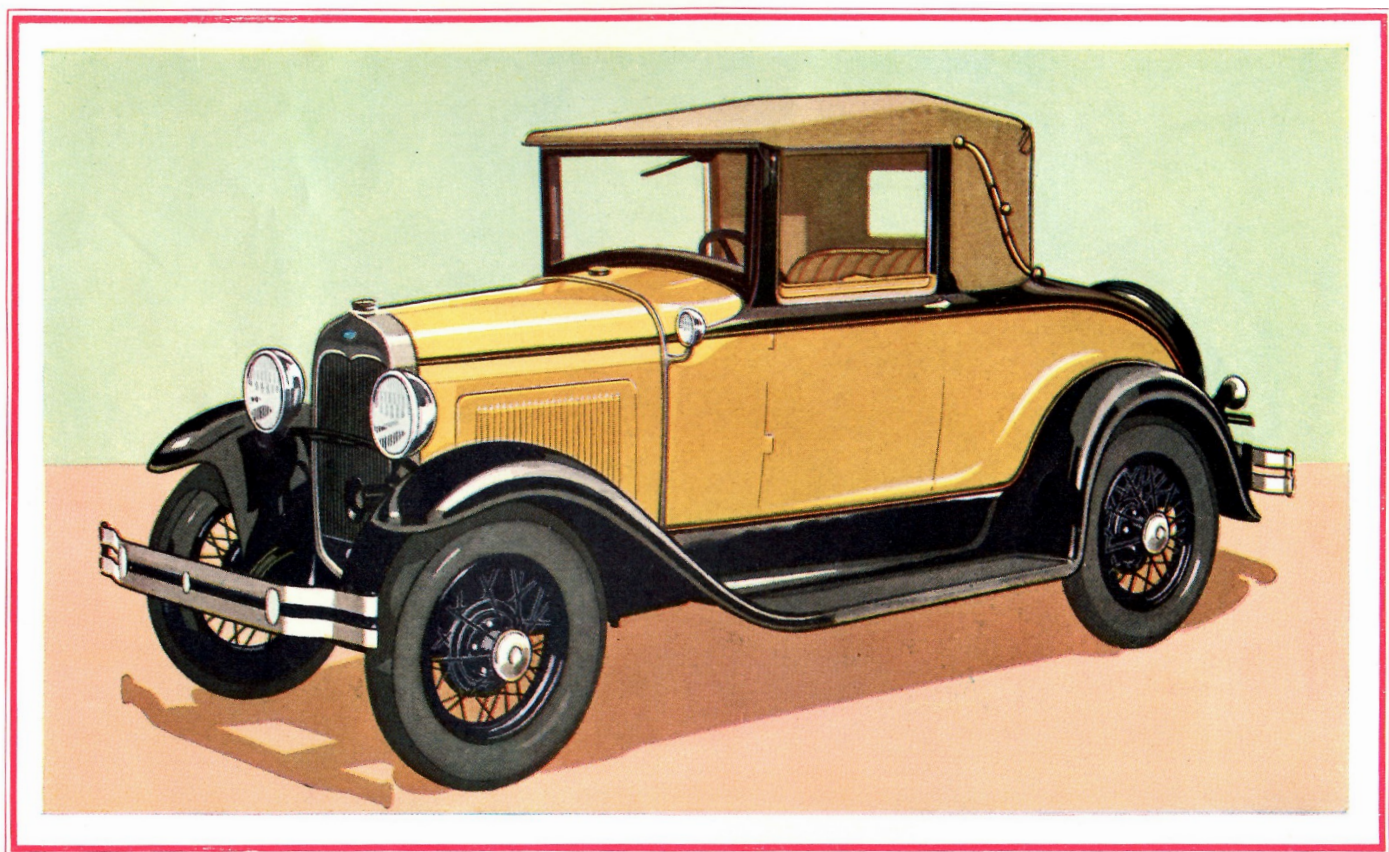
I am looking forward to seeing you all at the Model A 90th Birthday Dance, and at the AGM in July.

Now is the time to prepare your cars for the spring run in August ,and for all our summer activities.

I would like to thank all of our club, and especially my committee for their help and support over the past year, you are truly amazing and wonderful friends, thank you again ,you are such special people.

Make everyone's day, show off your A.

Peter Bayler. Club Captain



THE NEW CONVERTIBLE CABRIOLET

This new Ford Convertible Cabriolet is a particularly good choice for the woman motorist because it combines the smart, youthful style of the roadster and the snug, all-weather comfort of the coupe. The compact, landau top can be raised or lowered easily and quickly. The side windows are framed in bright metal. Wide, substantial dickey seat and cowl lights are included as standard equipment.

Tulsa Model A Ford Club

Model A Fan Air Flow

Posted on June 28, 2012

Submitted by Marvin Mellage.

The following information was taken in part from the Model-A Times magazine. There has been a lot of discussion about which is the best fan to keep that Model-A temperature the coolest. Is the original 2-blade metal fan, the later 4-blade metal fan, or the after-market 6-blade plastic fan the best?

For the tests a sophisticated instrument was used to measure the air speed in MPH (Miles Per Hour) at three different engine RPM's (Revolutions Per Minute). The results are not scientific but do give a good indication of which fan produces the most air flow. The tests were performed on a stationary vehicle.

The following tests indicated the fan air flow MPH speeds with engine speeds of 500 RPM, 1,000 RPM, and 1,500 RPM. The measurements were taken at the front right corner of the engine block.

The above Air Flow test results indicate:

The 2-bladed fan produces less air flow than either the 4-bladed or 6-bladed fan.

The 4-bladed fan produces the most air flow up to 1,000 rpm.

The 6-bladed fan produces the most air flow at 1,500 rpm and higher.

Summary:

The 2-blade fan should be adequate if the cooling system is up to par. If not, more fan blades might be needed. A car's higher speed will increase air flow through the radiator, but also increase engine heat. Remember, a good clean radiator, correct coolant, and tight fan belt are essential to good Model-A cooling.

Fan	Engine @500 RPM (12 MPH ground speed) Air Flow	Engine @1000 RPM (25 MPH ground speed) Air Flow	Engine @1500 RPM (37 MPH ground speed)
2 Blade	7 MPH	18 MPH	25 MPH
4 Blade	11 MPH	24 MPH	32 MPH
6 Blade	8 MPH	22 MPH	34 MPH

PAST EVENTS

Night Trial

On Saturday 19th May, a group of four Model A's and two Moderns participated in a Night Trial from Burwood to Spencer Park.

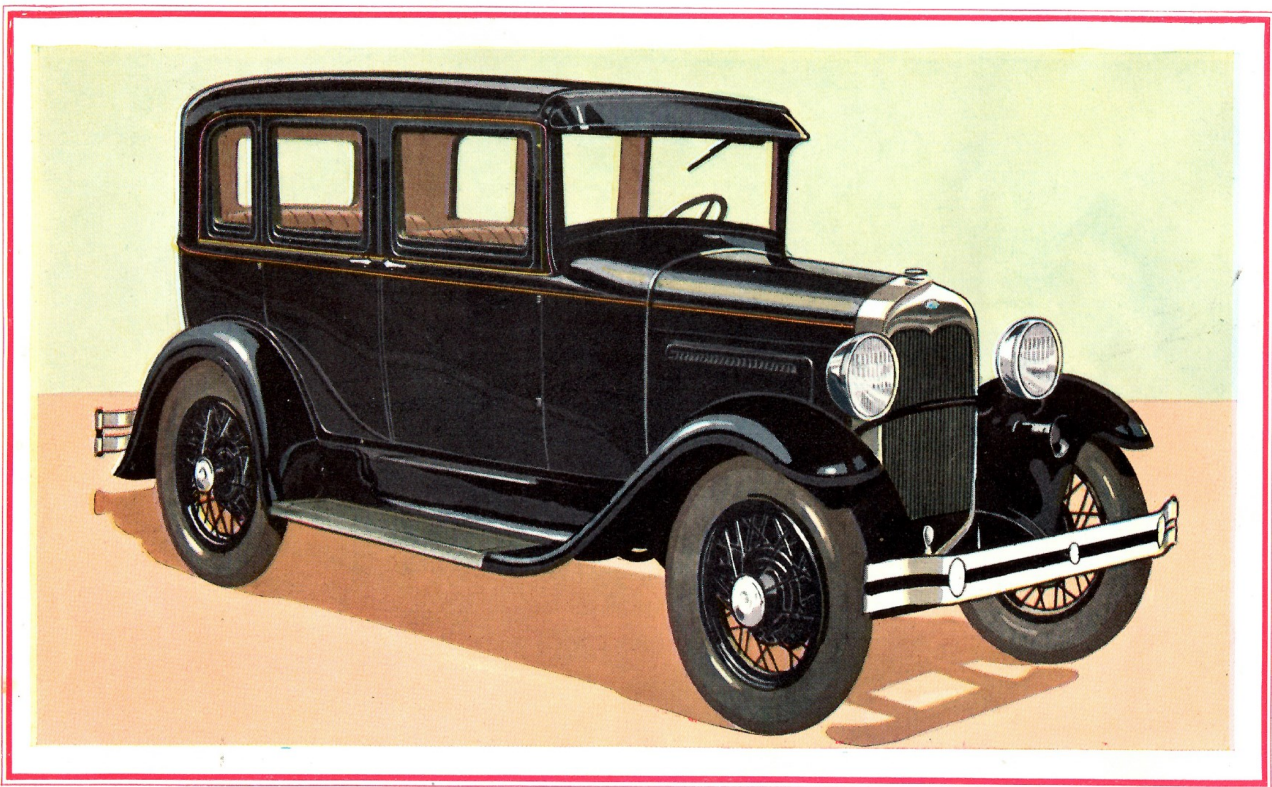
It was a perfect evening, beginning at the Shipley's home for mulled wine and nibbles. The trial took us to various locations including New Brighton, South Brighton, Ferrymead, along Port Hills Road, and through Prestons' Subdivision.

The evening concluded with a delicious potluck dinner and wine at the new and very flash Spencer Park Surf Life Saving Club building.

It was an extremely enjoyable night, with the great company of 8 couples. Just a pity the Royal Wedding and travels abroad kept others away.

A very big thanks to Barrie and Barbara for this very well organised event.

Sandra Olliver



THE NEW THREE-WINDOW FORDOR SEDAN

Another splendid family car because of its beauty of line and colour, and its comfort, safety, economy, reliability and alert, satisfying performance. Generous room is provided in both front and rear compartments. Driver's seat is adjustable. Appointments reflect the substantial quality that has been built into the car. The deeply piped seat upholstery is rich and luxurious, yet made for long wear as well as beauty.

Report Irishman Rally 2018

This year Irishman Rally was set to start in Oamaru on Sat 2nd June.

The Majority of entrants travelled there on Friday and it was also the National Steam Punk Festival over the same weekend.

Being there during Friday Afternoon was like a walk back in time to early London at the end of the 1800's, with the waterfront streets and stone building being a hive of activity on into the night.

People dressed in weird and wonderful costumes everywhere.

A visit to the Main Steam Punk Museum was a must see, followed by an evening of street entertainers including a Japanese Drumming Group, Fire Jugglers up and down the street and the usual food stalls amongst the old Oamaru Stone Buildings.

From here it was time to pick up our Rally pack from one of the heritage hotels then onto the camp for a good night's sleep.

Saturday morning required an 8am start and saw all 163 pre 1932 cars assemble at the local farmers market for a welcome from The Mayor. After a very brief briefing 400 plus people scrambled to the 90 mixed make cars, plus the 73 Model As of all types everywhere you looked. What a great sight.

A few locals turned out to see us on our way.

We headed out to the coast and along a back road for some miles admiring the view of the waves washing up on the beach. A turn inland taking us across farm land to the Whishaw 1909 shearing shed, through a ford then onto Tapui Homestead.

A warning to fit chains now if needed, nobody was stopping so on we went past Dunmovin Homestead though another ford and onto Bushy Creek Road (No Exit) OH DEAR that's a worry an old stock track (No Exit)again. Entered Loch Lomond Station (A Deer Farm) Warning close the gates. From here a very steep decent onto Earthquake Road (how appropriate) and on to Kurow for lunch at The Kurow Memorial Hall. 80 Miles down 93miles to go today providing we don't get lost.

Our Prepaid lunch was served to us by the ladies and pupils of the Waitaki Valley School and consisted of a choice of three roasted meats, mutton, beef or pork, Jacket Potatoes' Carrots, Peas, Pumpkin etc. and buttered bread roll all followed by a hot drink cakes and slices to die for. Not a mean effort to feed 344 plus people streaming in constantly over a couple of hours.

Afternoon run started by crossing the Waitaki River Bridge then the Hakataramea River Bridge.

At this point we were redirected onto the Hakataramea Pass as time was against us.

Nearing the summit we were meet by a very thick mist/ fog and the most amazing hoar frost which required a photo stop of the fences , bushes and Rose Hip berries, amazing. As it was a bit early for the sunset from the summit we continued on downward through many dry fords (seems to be FORDS everywhere) and out to Dog Kennel Corner.

Some thought the better route was over McKenzie Pass. Cruise into Fairlie with a few cars not being able to get past the Kimble without a refuel, but the majority making it to the Gladstone at some time during the evening for a lovely meal.

Total today 173miles.

On arriving back at camp the sounds of raucous singing coming from the kitchen required an investigation only to find the group of regular elderly gentlemen in fine form singing and chatting up a couple of young French Backpackers (no prizes for guessing the gender) and inviting them on the Trip of a lifetime tomorrow.

Sunday Morning 8am very mild frost hardly noticed by the rabble assembled outside the Gladstone awaiting their briefing for today's run. Two young ladies noticed in the back of car grinning from ear to ear.

Headed away towards Tekapo out of Fairlie turning off the main highway onto Spur Road nice steep climb to warm the car up. A lovely long drive through country side some of which I have never seen including places like Raincliff, Limestone Valley, Pareora, Esk Valley Rd, Backline Rd then turning into "Blue Cliffs Station".

At 10.15am we had a welcome from Members of the Rolleston Family who gave us a very interesting talk on the history of the homestead and farm through many generations then invited all present to view the inside of this amazing 1890 building, nine bed rooms, servant quarters etc.

The most interesting observation was all the original furniture and china, floor coverings and right down to, hanging in pride of place 'the entrance hall' a long handled copper bed warmer.

The original owners after building this amazing house travelled to England on their Honeymoon and bought back all the furniture, china, crystal, and Servants which included 5 gardeners to start their new life (no containers in those days).

At 10.45am we left the homestead and travelled across the farm to the sign to direct us in single file to the top of the hills and on to the Airstrip. The trick here was to park as close as you could to the next car as we all had to assemble at the top before anybody could attempt the downward journey on the very narrow sometimes just grass track. Lucky there had been no rain that day or snow.

After approx. 100miles we were back in Fairlie for a well-earned hot lunch put on by the Fairlie Kindergarten catering for 340 people, well done ladies you never fail to impress.

After lunch we were invited to join in the bonfire and grasskana at 'Strathconan Station' (Pete's Patch) for some socialising and sharing of stories while others tried to outdo each other on the slippery grass.

As the sun went down we retired back to the Fairlie Community Centre for nibbles, tea and coffee provided by the 'Silver Beats Leisure Marchers' and whatever liquid you had left over from the weekend Prize giving was at 7pm with a large table of goodies for the lucky and not so lucky.

The winner's trophy this year was awarded to Morrie Dunnage (Model A) with the runner up going to local man Reg Horner (Marmon)

Well done to James & Jane and team for another amazing event and good luck to Morrie & Reg for next year. We will be there.

Rod Thrower

CLUB CAR

Another month with no motoring for the club car. New WOF and relocation due to sale of Holy Road property where car has been stored for many years.

EDITORS NOTE

I would like to remind members that this is your magazine, and articles, photos and members profiles are most welcome.

Send info to email afordscript@gmail.com

Please consider providing the script with your input, any suggestions on anything relating to Model A's.

As Anne & I have been away on holiday, I would like to thank Graeme Scott for processing the June Script, and to Bruce Miles for distributing the mail out copies.

Regards Graham



Rod Thrower in a Haw Frost, while on Irishman's Rally



Irishman's Rally. Photos by Rod Thrower

COMING EVENTS

Saturday June 30th- Mid Winter Dance, VCC Barn \$25 per person

Band "Smooth Talk" from 7:00pm—11pm

Mid Winter Dance



**"The Barn"
VCC Cutler Park**



Saturday 30th June from 7pm

Dance away the winter blues in front of a roaring open fire, enjoy mood lighting,
and celebrate 90 years' of Model A.

Era dress encouraged, bring some friends, make up a party.

Only \$25 per head

Live band 'Smooth Talk' (7-11pm)

Supper served

BYQ refreshments & glasses

Spot prizes - lucky numbers

RSVP: by Friday 22nd June (for catering purposes)

Email: brent@glassmiles.co.nz with names and numbers, or

Phone: Brent Miles 343 9482 (anytime)

Payment by: Wednesday 27th June

By direct credit (with name and 'dance' reference) to: 06-0805-0018320-000
or by cheque posted to: PO Box 4212, Christchurch



Annual General Meeting

**Sunday July 29th - AGM. Two Fat Possums, West Melton Village, Weedons Ross Rd
11am meeting with lunch at 12 (order meal on arrival)**



Fashion Tips

Leopard Plush Yoke Lining

STYLISH DRESS COATS

TAILORED RIGHT PRICED RIGHT

Quality and Snap Combined in this Overcoat

Fashionably dressed men will welcome the opportunity to buy this Overcoat at such a big saving. Tailored of warm, sturdy All Wool New Diamond Weave Overcoating, an attractive fabric that will give long service. Strong lustrous lining, resembling silk, in yoke and sleeves. Belt may be worn as half belt in back, as an all-around belt, or left off entirely. Average length, 45 inches.

Sizes: 34 to 44 inches. Give Chest Measure, also Height and Weight.

4 R A923 Blue Gray
4 R A924 Brown
OUR PRICE **\$15.98** Postage, 25c Extra

BLUE GRAY OR BROWN DIAMOND WEAVE

\$15.98

Heavy All Wool Herringbone Weave

SNAPPY ALL WOOL NAVY BLUE MELTON LEOPARD PLUSH LINED

\$17.50

Navy Blue Melton—Leopardine Lined

Men who take pleasure in wearing smart and snappy clothes will admire this warm fashionably tailored Overcoat of fine quality, closely woven heavy All Wool Navy Blue Melton Cloth in the popular double-breasted tube style with two rows of buttons and buttonholes. Will be one of the most popular models worn on Fifth Avenue and in other fashion centers this season. The yoke lining is an entirely new feature that has been adopted by New York's best dressed men. It is a strong and durable leopard colored fabric fur, known as Leopardine, and has the appearance of very expensive leopard fur. This lining will be a very popular feature in coats this winter. The coat is finished with a shape-retaining collar, lapels and two deep, roomy pockets. Average length, 44 inches.

Sizes: 34 to 44 Chest. Give Chest Measure, also Height and Weight.

4 R A938 Navy Blue
OUR PRICE..... **\$17.50** Postage, 25c Extra.

LATEST STYLE GRAY OR BROWN ALL WOOL HEAVY OVERCOATING

\$19.95

FASHIONABLE NAVY BLUE ALL WOOL CHINCHILLA

\$19.75

POPULAR CHESTERFIELD MODEL DARK OXFORD GRAY OR BLUE

\$19.95

Fine Quality All Wool in Dark Gray or Dark Blue Chesterfield

The choice of the best dressed men—a smart and fashionable Chesterfield Model Coat of fine quality, closely woven heavy All Wool Herringbone pattern in a Dark Blue or Dark Oxford Gray. Appropriate for either street or dress wear. An exceptionally warm and comfortable coat that will give long service. A style and quality that ordinarily sells for several dollars more than the price we are asking. Durable lustrous Rayon in yoke and sleeves. All seams are neatly taped, adding to its strength. Has vent in back. Broad square shoulders, broad peak lapels and fine quality velvet collar are characteristic features of this better class of overcoats. Length, about 45 inches.

Sizes: 34 to 44 Chest. Give Chest Measure, also Height and Weight.

4 R A934 Dark Oxford Gray
4 R A935 Dark Blue
OUR PRICE..... **\$19.95** Postage, 25c Extra

One of Our Best and Most Popular Models

Quality and style are built into this handsome Overcoat all the way through. Custom tailored according to our own rigid specifications. Made of heavy plaid back (two fabrics woven into one), closely woven overcoating in a pleasing Medium Gray or rich new Brown, (see small illustration to the right) in a beautiful chevron weave that adds pep and smartness to the material. Yoke and sleeves are lined with strong, lustrous silk resembling Rayon. Has vent in back. Length, about 45 inches. This big, dressy, stylish overcoat will give you years of service and satisfaction.

Sizes: 34 to 44 Chest. Give Chest Measure, also Height and Weight.

4 R A936 Medium Gray Chevron Weave
4 R A937 New Brown Weave
OUR PRICE..... **\$19.95** Postage, 25c Extra

All Wool Navy Blue Chinchilla Always a Favorite

This popular style Overcoat is handsomely tailored of All Wool Navy Blue Chinchilla. This season's latest fabric that's worn by the best dressed men and young men. One of the best coats you can buy for all-around service since it is equally desirable for either daytime or evening wear or any dress occasion. This exceptionally warm Chinchilla will be one of the smartest overcoat materials this season. This model is one of our greatest values. Double-breasted style with wide peak lapels. Strong lustrous Rayon yoke and sleeve lining. Length, about 45 inches.

Sizes: 34 to 44 Chest. Give Chest Measure, also Height and Weight.

4 R A922 Navy Blue Chinchilla
OUR PRICE..... **\$19.75** Postage, 25c Extra

Inside View of 4 R A936 and 4 R A937

FOR SALE

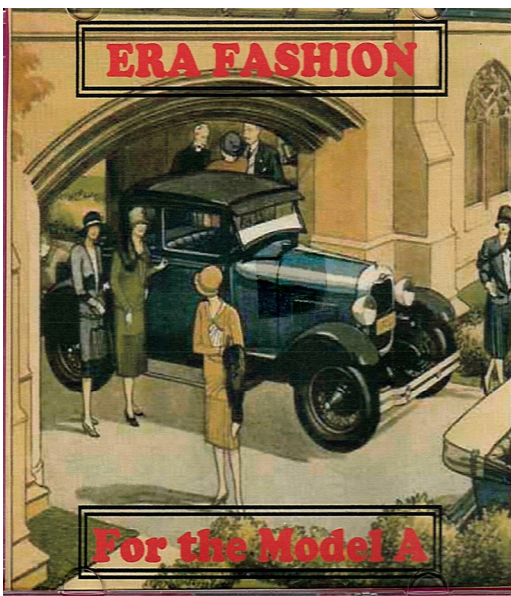
ROBERTSON SCREWS



Suitable for the Model A
and T Fords plus other
1920's—30's Canadian
built cars.



Email kandjstraw@gmail.com or phone Kevin 0295-245-048
for details of all the various sizes available.



ERA FASHIONS FOR THE MODEL A

A collection of images detailing
Ladies, Gents and Children's clothing
Accessories and fabrics from
1928 to 1931

This CD contains 282 pages showing
Thousands of different designs.

\$15.00

Please contact Judy Straw

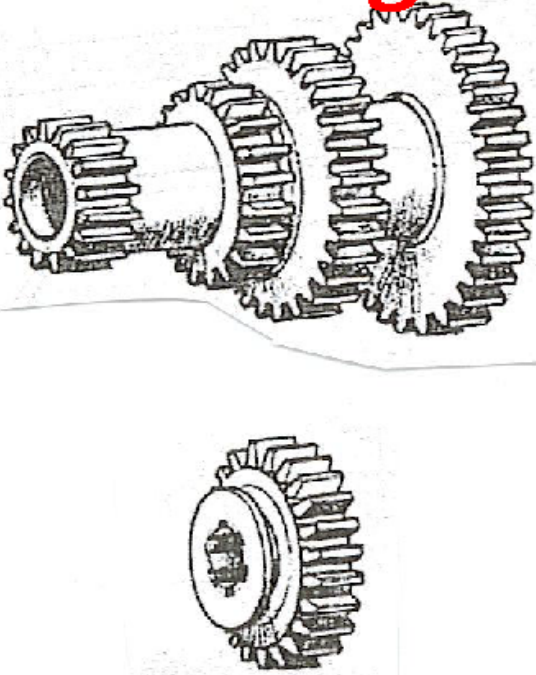
(03) 338-3686 or Email kandjstraw@gmail.com

FORDSCRIPT If we have it wrong and are posting you hardcopy when you would prefer it emailed or vice versa or you know someone who should be getting a Script and isn't, please let us know. Either give us a call, 3515919 or email afordscript@gmail.com

Help us make The Script a success. We would be grateful for any material you feel could be appropriate to include in our Club's newsletter.

CLOSING DATE for copy for the next Script is 20 July 2018. Please send to the Editor, Graham Evans afordscript@gmail.com. The views expressed in this magazine are personal opinions of those who contribute and do not necessarily represent the views or methodology of the Canterbury Chapter of the Model A Ford Club of America. Thanks goes to MAFC member magazines and web sites as well as other sources who supply material to our club which we reprint in the magazine.

Model-A-gearbox upgrade.



Improved 2nd gear ratio by 15% to increase overall road speed in 2nd gear and hill climb ability without stress revving your engine.
With the installation of this new cluster and 2nd gear, this is all that is needed to achieve the effect desired i.e.: higher speeds in 2nd gear, making traffic driving and hill climbing not a problem.

COST
All new cluster and 2nd gear **\$1890.00 + P&P**

CONTACT
Errol or Linda McAlpine
On
1127 Scenic Drive
Swanson
Auckland 0614
New Zealand

PH (09) 8329818
MOBILE (0274) 543 983
EMAIL: vet.vin@xtra.co.nz
Web; www.veteranvintagecars.co.nz

CLUB CAR :

Remember that the Club Phaeton is available for members to use. If your Model A is not mobile, give some thought to borrowing the Club car to join in one of our runs. Guidelines for its use are printed inside the back of the membership list.

Graham Evans (ph. 03 351 5919) is the custodian of the car and looks forward to your call requesting the use of the car.

CANCELLATIONS : In the event of unsuitable or doubtful weather, cancellations or postponements will be emailed to you. We will be printing the run organiser in the coming events, please feel free to contact them or any of the Club committee members.

ANTIQUÉ FORD PARTS

**THE MODEL 'A' SPECIALISTS
DEREK & JUDY THOMASON**

**492 MAIN ROAD HOPE, R.D.1,
RICHMOND, NELSON
PH / FAX: (03) 544 7826**

Email: antiqueford@xtra.co.nz

OPEN 7 DAYS if HOME

**Large range of new and original parts at
REALISTIC PRICES**

Veteran **AND** Vintage

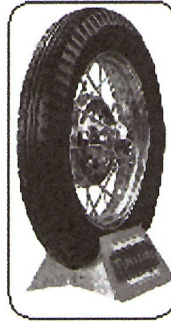
Spares and Repairs Ltd. - Model T & Model A

Ph: 09 8329818 or 027 4543983

Email: vet.vin@xtra.co.nz



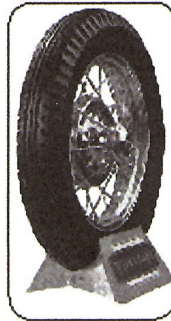
**LUCAS
BLACKWALL
TYRES 19"**
475x500x19
\$220 each
or \$214 (x4 tyres each)



**FIRESTONE
BLACK
TYRES 19"**
475x500x19
\$334 each
or \$328 (x4 tyres each)



**LUCAS
BLACKWALL
TYRES 21"**
440x450x21
\$220 each
or \$214 (x4 tyres each)



**FIRESTONE
BLACK
TYRES 21"**
440x450x21
\$334 each
or \$328 (x4 tyres each)



**LUCAS
BLACKWALL
TYRES 30x3¹/₂"**
\$282 each
or \$276 (x4 tyres each)



**FIRESTONE
WHITEWALL
TYRES 19 OR 21"**
475x500x19
440x450x21
\$389 each

(Prices subject to change without notice)

Prices exclusive of GST ex Auckland

NO HIDDEN COSTS

Early Ford Parts

Mufflers



Mufflers as per original design and shape.

Lock formed cone as original.

Original length and also long tail pipe version available

\$270.00 inc GST

- Over 1400 new Model A parts in stock
- Competitive prices on all Model A parts
- We also import larger items on indent. Air or sea

**GET A QUOTE BEFORE SELECTING YOUR
SUPPLIER!!!**

Early Henry Ford Parts

11 Henry Street

Ph 03 379 7370

After Hours 021 637 656

www.earlyfordparts.co.nz

earlyfordparts@xtra.co.nz

All prices include GST