

A Ford Script



July 2023

Official Newsletter of THE MODEL "A" FORD CLUB OF AMERICA

Canterbury New Zealand Chapter. PO Box 4212 Christchurch

COMMITTEE

Club Captain	Lyn Miles	027 228 6292
Vice Club Captain	Gerry Lake	0204 112 3717
Treasurer	Brent Miles	0274 326 512
Secretary	Russell Genet	03 329 9065

General Committee

Andre Kraenzlin		021 996 223
Ann and Graham Evans		027 320 7948
Annette and Lindsay Painter		027 644 7892
David Dacombe		03 313 7341
Glenn Birnie		03 347 4849
John and Sandra Olliver		03 359 6360

Facebook page co-ordinator	Sandra Olliver	
Script Editor	Andre Kraenzlin	afordscript@gmail.com
Club Car Custodian	Graham Evans	027 320 7948

WEBSITE: Model A Ford Club Canterbury - <https://www.modelaford.co.nz/>

Did you know our club has its own Website, type 'Model A Ford club Canterbury' into Google. There are a number of pages of interest including all the Scripts from 2014 (able to be downloaded and/or printed), notes on future events as well as market place where free adds for members can be posted.

COVER: Mid Winter Dinner

CLUB CAPTAIN'S REPORT

Another excellent event was the Mid Winter Christmas dinner. This year we had a short run before arriving at the Templeton RSA. There were 15 couples who attended and many in era dress – which is always lovely to see. We enjoyed the fun questions which Annette provided, as well as the lucky numbers and other activities.

Our next event is the trophies, presentations and the AGM at 11am at the Elmwood Trading Co – 1 Normans Road. This will be followed by lunch.

Annette Painter and Andre Kraenzlin have indicated they will not seek re-election and I thank them for their excellent input over the years. Annette for her expertise in knowing who and where to provide the food we so knowingly expect and Andre for his dedicated and wonderful work as The Script editor. Russell has also indicated that he will still stand for the committee – but not as secretary.

Obviously, this will mean that we have some huge gaps to fill and I would ask that you consider thinking about being able to help the club if possible.

At our last meeting we have considered events for the rest of the year. While we have been asked to provide something different from what is always done, we cannot do this unless we also have some ideas from members about what they would like to see included in our programme. So..... get your thinking caps on and please let me know if you are able to come up with an idea or three.

Hopefully we will meet soon.

Kind regards.

Lyn

We are pleased to let you know that Alan Hill is progressing well after his operation. We wish him a speedy recovery.

AGM COMMITTEE NOMINATION



Canterbury Branch Model "A" Ford Club of America Committee Nomination form 2022/2023 for AGM Sunday 16 July

A chance to assist our members by becoming involved with the running of your Club's activities and social events.

All committee positions are open for nomination each year.

Meetings are held monthly for approximately one hour.

Please consider forwarding your name by completing this form and email to our club's contact canterbury.nz.mafca@gmail.com or post to PO Box 4212, Christchurch no later than **Friday 30 June 2023**.

I,

Agree to be nominated for the position of

On the 2023/24 Committee of the Canterbury Branch Model A Ford Club of America.

.....

Signed

.....

Proposer – signed

.....

Name

.....

Secunder – signed

.....

Name

Nominee, Proposer and Secunder must be financial members of the Canterbury Branch.

AGM RULES ADVICE OF CHANGE



CANTERBURY (N.Z.) CHAPTER

Club of America

P.O. BOX 4212, CHRISTCHURCH, NEW ZEALAND.

Alteration to the Canterbury Branch Model "A" Ford Club of America Rules

Advice of Change for AGM Sunday 16 July

Page:

Number:

Subject:

Required Alteration:

.....
.....
.....
.....
.....
.....
.....

Reason:

.....
.....
.....
.....
.....
.....
.....

Signed: Name.....

Date:

This form can be completed by a financial member and returned to our club's email canterbury.nz.mafca@gmail.com or post to POBox 4212, Christchurch no later than **Friday 30 June 2023.**

COMING EVENTS

2023

July 16th

AGM

Location: 11am at Elmwood Trading Co.
1 Normans Road, Strowan

11am for AGM, followed by lunch at 12 – 12.30pm. Lunch to be ordered when you arrive and before the AGM.

Menu on next page

Committee position vacant: Secretary

Other positions vacant: Script editor, Web page editor.

August 20th

Breakfast Run

Location: Details to be confirmed

Sept 22nd – 24th

International Model A Day

Location: Richmond, Entry form on page 8

If you fancy a road trip to Geraldine, then maybe visit the Geraldine Motor Muster on the weekend from the 14th – 16th July. For more information please see page 10.

If anyone would like to add any interesting ideas that they would like to see us offer to our members for this year, please contact Lyn or Brent.

AGM Meal

LUNCH

BRUNCH

FREE RANGE EGGS Two eggs any style, ciabatta or wholegrain toast, with house made chutney ADD Bacon	\$16.00 \$ 5.00
EGGS BENE Two soft poached eggs with Akaroa smoked salmon OR streaky bacon on ciabatta topped with hollandaise sauce.	\$20.00
CHICKEN WAFFLES Tender fried chicken on Belgian waffles topped with crispy bacon bits & chilli maple syrup.	\$23.00
THE ELMWOOD BIG BREKKIE Two eggs any style, bacon, sausages, hash brown, mushrooms, slow roasted tomatoes and toasted ciabatta.	\$24.00

BREADS

Basil pesto and parmesan flatbread	\$13.00
Garlic Ciabatta with home made garlic and herb butter.	\$13.00

SOUP & SALAD

CREAMY SEAFOOD CHOWDER Salmon, shrimp, mussels and squid served with house bread.	\$22.00
THAI BEEF SALAD 180gm grilled beef sirloin, tossed with lettuce, tomato, cucumber, red onion and mint in lemon, garlic and chilli dressing. Topped with fried shallots.	\$22.00
THE CLASSIC CAESAR (GF Option Available) Cos lettuce, crispy bacon, croutons, parmesan, poached egg, tossed in caesar dressing.	\$22.00
ADD Grilled chicken	\$26.00
OR Akaroa smoked salmon	\$28.00
OR Grilled prawns	\$28.00

PIZZERIA - \$24

MOROCCAN LAMB - Spiced lamb, red pepper, red onion, mushroom.
SICILIAN - Pepperoni, kranskys, ham, red onion, BBQ swirl.
MEDITERRANEAN - Chicken breast, mushroom, red onion, fresh tomato.
MARGHERITA - Fresh tomato, mozzarella and basil.
SANTORINI - Smoked salmon, capers, red onions, topped with cream cheese.
TUSCAN - Chicken breast, crispy bacon, red onion, aioli swirl.

GF - Gluten Free V - Vegetarian

MAINS

SALT AND PEPPER CALAMARI Crispy flour-coated calamari, fried and served on a bed of salad greens, lemon wedges and aioli.	\$19.00
MOROCCAN MEATBALLS Beef meatballs cooked in spiced tomato sauce with toasted ciabatta.	\$19.00
GARLIC PRAWN HOT POT Prawns tossed in olive oil with garlic, coriander and a hint of chilli, in a sizzling cast iron pot, with ciabatta.	\$22.00
OPEN STEAK SANDWICH Chargrilled 180gm sirloin steak, lettuce, red onion, roasted bell peppers and melted mozzarella cheese on ciabatta, finished with aioli swirls, served with fries.	\$27.00
SPAGHETTI CARBONARA Spaghetti, bacon, mushroom and red onion, cooked in a creamy sauce, topped with parmesan cheese. Add chicken	\$25.00 \$5.00
THE ELMWOOD BURGER 200gm homemade beef pattie, edam cheese, onion rings, tomatoes, lettuce and tomato chutney, served with fries.	\$24.00
BALINESE CHICKEN CURRY (GF) Creamy chicken curry with Balinese flavours, served with fragrant jasmine rice and popadoms.	\$26.00
RICOTTA AND SPINACH CANNELLONI (V) Home made ricotta and spinach filled cannelloni pasta baked in Duglere sauce, with garlic ciabatta.	\$22.00
FISH AND CHIPS Emerson's beer battered Blue Cod, served with fries, salad greens, tartare sauce, tomato sauce and lemon wedges.	\$28.00
CHICKEN BURGER Crispy chicken breast, lettuce, tomato, cranberry sauce and brie, served with fries.	\$24.00
NASI GORENG (GF) Indonesian fried rice with prawns and chicken, sambal oelek and fried egg, topped with fried shallots.	\$26.00
TRADIES STEAK, EGGS & CHIPS (GF) 250gm Ribeye steak cooked to your liking, served with fries and topped with 2 eggs and jus.	\$32.00

SIDES

Fries / Hash Browns / Bacon / 2 Eggs	\$6.00
Garden Salad / Roast Vegetables	\$9.00

INTERNATIONAL MODEL A DAY 2023

TOP OF THE SOUTH MODEL A CLUB INC.

INTERNATIONAL MODEL A DAY 2023

RALLY REGISTRATION FORM

LIMITED TO FIRST 50 CARS

EVENT DATES : Friday 22nd September : Registration and noggin n' natter.
Saturday 23rd September : Rally event and dinner
Sunday 24th September : Breakfast, local attractions & farewell
Note : Final close off date for your entry is Friday 8th September 2023

DRIVER :

Phone :	Email:	Mobile :
Address :		
Suburb :	City :	Post Code :

PASSENGER INFORMATION.

Navigator's name :

Passenger name(s).

VEHICLE INFORMATION

Vehicle Body Type :	Year :
Registration Number :	
Membership of which Model A Club (if applicable) :	

ENTRY FEES.

Vehicle and Driver	Includes vehicle entry (\$20) & drivers rally dinner	\$ 55	
Navigator	Rally dinner	\$ 35	
Passengers / Supporters	Rally dinner per each	\$ 35	

Your total entry costs are \$ _____.

Please note that no meal refunds will be available if cancelled after 8th September

Sunday breakfast -venue to be confirmed.

Indicative numbers only, for catering =

Note : this event will be pay as you go.

METHOD OF PAYMENT

Internet banking number : 03 0751 0018885 000 Reference is your Name and Phone Number.

Completed entry form may be Emailed to : john.herd@actrix.co.nz

Or Post to : 111 Wakefield - Kohatu Highway. RD 1. Wakefield 7095

CONTACTS

Rally Director : John Herd	ph 03 541 8818 mo. 027 6888 200	john.herd@actrix.co.nz
Rally Treasurer : Dot Humphries	ph 03 539 0071 mo. 027 2222 464	hillberry@xtra.co.nz
Rally Secretary : Ann Holmes	ph. 03 542 3169 mo. 021 032 4605	daholmes@xtra.co.nz

THE TOP of the SOUTH MODEL A CLUB INCORPORATED WILL NOT BE HELD LIABLE FOR ANY DAMAGE OR LOSS IN RESPECT OF ANY CLAIM IN RELATION TO ANY EVENT OR FUNCTION BEING HELD AS PART OF, OR IN CONJUNCTION WITH THE 2023 INTERNATIONAL MODEL A DAY.

**WE LOOK FORWARD TO HOSTING YOU FOR THIS LOW KEY FUN WEEKEND
CELEBRATING THE MODEL A FORD**

INTERNATIONAL MODEL A DAY 2023

INTERNATIONAL MODEL A DAY 2023.

Hosted by The Top of the South Model A Ford Club (Inc.)

This event is to be based in Richmond, Tasman District.

Weekend plan.

Friday 22nd September.

From 5.00 pm

Registration meet & greet at the Nelson VCC Clubrooms which are located within the grounds of the Nelson Speedway Association, on the corner of Lower Queen Street and Lansdowne Road, Richmond. Light snacks will be available. Refreshments will be BYO. There are numerous dining facilities available within Richmond should you wish to dine out following registration.

Saturday 23rd.

Assembly time here from 9.00 am

The Rally event will be centred around the Tasman District. The departure point will be the Nelson VCC Clubrooms with a 10 am departure.

Provide own lunch for the day, however our designated lunch stop will have a café facility on site providing tea/coffee and light snacks. Our designated route will take us past a popular local bakery located just prior to our lunch stop. Toilets are available at our lunch stop.

The evening Rally dinner will be held at the Waimea Club, Lower Queen Street, Richmond. Assemble at venue from 6.00pm.

Sunday 24th.

For those who may wish to partake, we are looking to hold a farewell breakfast. Venue details to be confirmed. This would be a pay as you go event.

Please arrange your own accommodation. Some suggestions within the Richmond area are :

Richmond Motel and Holiday Park. 29 Gladstone Road, Richmond

Gladstone Motel. Richmond.

Oxford Court Motel. 73 Oxford Street, Richmond.

Saxton Lodge. 103 Saxton Road East, Stoke.

You will be advised in due course of final details and / or possible changes to the planned events for this weekend should they arise.

GERALDINE

Motor Muster

Proceeds
go to
charity



**KENNEDY
PARK**

Vintage cars, hot
rods, motorcycles,
trucks & all

**Fri 5 pm
Rego & cruise**

**Sat 10 am - 2 pm
Public car show**

**Sun 10 am
Car museums
tour**

**Gold coin
donation**

**14-16
JULY**

Head to Geraldine Motor Muster FB page for information

PAST EVENTS

Eight Modern cars and one Model A turned up at the Papanui WMC at 4:45pm on Saturday evening. One Couple, the Michelles all the way from Dunedin.

After a short run we arrived at our final destination, the Templeton RSA. The tables were beautifully decorated, and we had the luxury of a staffed bar.



After being seated, Annette asked us a few quiz questions and there were prizes to be won. Lucky for me, my wife is an avid viewer of "The Chase" and managed to score us some Gin. We learned lots, such as, you need a hunting license to be able to buy a mouse trap in the state of California!

Dinner was a generous buffet with lots of salads, ham, chicken and lamb. After dinner we played musical chairs and everybody had to look for new table friends before we could go for dessert. Dessert was Pavlova, fruit salad and Christmas Pudding.

The Mid Winter Dinner was era dress themed. All of the participants did a fashion parade so the best dressed woman and man could be chosen. Winners to be announced at the upcoming AGM.

It was a great evening enjoyed by all. Thank you to all involved for organising such a great event.



Gas Gauge. A-9300-E.

Leakage from the gas gauge can happen anywhere at any time, and is usually just enough to be annoying. *All gauges from the start to the end of production were basically the same.*

To repair a gas gauge leak.

Firstly, purchase or borrow the correct gauge tools, and purchase a cork gas gauge gasket set. (Not neoprene.) See your friendly parts supplier.



Both these parts are inexpensive. It is a good idea to purchase two gas gauge gasket sets. Someone you know may need one also.

Disconnect the battery.

The level of gas in the tank **MUST** be well below the gauge level.

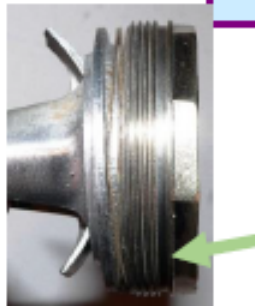
Remove the dash panel. (4 screws.) Pull the dash out and away from the tank. There should be enough room to get at the gas gauge. Carefully check to see where the weepage is coming from.



Complete gauge.



If the weepage is from the bottom of the outer large nut, as the bottom green arrow, it will be a reasonably simple fix. Undo the outer nut and pull the complete gauge from the tank. Watch for the two brass slip rings which must be reinstalled in the same position. Be careful, as the complete gauge has a cork float at the end as pictured at left. At the rear of the gauge is a cork gasket which mates to the tank. Remove any cork from both surfaces and clean out the fine grooves on both surfaces. Install the new gasket with a slight smear of treacle on all surfaces. Install the two brass slip rings, which must be lightly oiled to slip together. Reinstall and tighten the outer nut, ensuring the gauge is level.



1" square bar is ideal to remove the inner ring.



Inner gauge ring removed, showing gauge face plate and the remains of a cork gasket.

Gas Gauge Order of Disassembly & Assembly.



Removal From Tank. A set of tank tools is required. A-9300.
Firstly, disconnect the battery.

1. Remove the dash panel, if not already removed.
2. Remove the inner gauge nut.
3. Remove the outer gauge nut.
4. Remove the complete gauge from the tank.
5. With a sharp point remove the 'Face Plate'. A projection on the bottom of the plate fits into a groove locating the plate in the correct position. *New face plates are available.*
6. Remove the cork gasket below the face plate.
7. Carefully remove the glass. Be careful not to scratch it.
8. This exposes the 'level indicator'. Picture at right.



Both inner and outer rings are nickel plated. Chrome will completely spoil your restored dash panel which is also nickled. Purchase a 'gas gauge' overhaul Kit. You will need a new cork float, a face plate, a gasket set, and brass slip rings. All this should come in a complete set, but check with the supplier. A modern plastic or brass float can be use if you do not wish to use cork. Clean up all the old parts. Try to use the old glass lens if possible. *(Some replacement glasses are plastic yuk.)* Two surfaces which must be clean, are the back of the gauge and it's mating surface on the actual tank. They are grooved as pictured below. Clean out the grooves with a fine point.



Grooved surfaces arrowed.

The first gasket installed fits against the gauge mating face in the tank. Pic. 'B'. Place a slight smear of treacle on both surfaces. Grooves can be seen in the old gasket and the rear of the gauge, picture 'C'.

Installing A New Gas Gauge Cork A-9313-C, or brass float.

Install a new cork float on the end of the wire, or the brass float from a Tillotson carb soldered to the gauge wire works very well.

The wire has a small washer at the end, and the wire is crimped at right, to hold the washer in place. By carefully removing the crimping. This process can be duplicated with a new cork or brass float, or the brass float can be soldered in position. Coat the cork with tank sealer and leave to dry for a few days outside. Two coats are better. Or use shellac.



Float Calibration.

Gauges were calibrated so they read "Full" when the cork reaches the top of the tank, with a reserve of one gallon when showing zero. The float wire can be adjusted by bending the wire until accuracy is achieved.

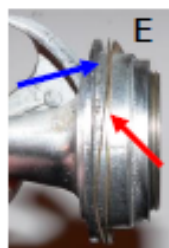
To check as follows: Hook a wire through the filler opening and lift the float until the cork touches the top of the tank. It should read 'F'. To adjust, the gauge has to be removed from the tank in order to bend the wire. The only bend in the wire should be 1 1/2" back from the pivot pin. The 30/31 tanks required a 1 5/8" drop bend to accommodate the 1930 style tank, opposed to the 28/29 tank.

Gas Gauge Assembly and Installation. A-9300-E.

Once the float calibration has been checked and once all the parts have been thoroughly cleaned including the concentric rings on the back of the gauge hole in the tank, the back of the gauge casting, as pictured previously, you are ready to assemble. Place a smear of treacle on both sides of the large cork gasket and place it in the gas gauge hole in the tank.

The following assembly of the gas gauge can be either done on the workbench or on the tank. It is difficult to hold the gauge satisfactorily in a soft jawed vice to assemble, but assembling in place in the tank does have advantages, as described below. Place a light coat of oil on the two slip rings. Place them over the gauge assembly and against the back flange of the gauge housing, as picture 'E' next page. The slip washers will prevent the gauge assembly from turning when the

outer nut is tightened down. (Although it also helps if you can hold the inner ring with the gas gauge tool as an added precaution to help keep the 'face plate' line horizontal.)



Slip rings in position. Red arrow.



Outer nut in position, with slip rings behind.



Slip rings.

Insert the complete gauge into the tank opening against the large cork gasket, arrowed in blue, picture 'E'. Screw the outer ring onto the tank pushing the gauge against the cork gasket keeping the assembly level. Picture 'D'. This is important. Do not tighten this outer ring firmly just yet. Install the first small gasket, very lightly smeared with treacle. Install the glass gauge lens, followed by another small cork gasket very lightly smeared with treacle. Then the face plate suitably slotted into the hole at the bottom of the inner thread to keep it square to the gauge. If the two previous gaskets are too thick, the face plate will not fit correctly.



Gauge glass showing thickness of 3/32" x 1 1/8"



Gauge components less gaskets.

Screw down the outer ring firmly. With the inner ring tool, hold the inner ring in position to keep the gauge level. Get some assistance to undertake this.

By using treacle, if the gauge has to come apart in the future you won't have problems, and the syrup is impervious to fuel, or if you have a slight weep from the gauge, it can be tightened. Don't over tighten the inner ring as it can break the glass.

Don't expect 100% satisfaction at your first attempt. You won't know how successful you are until you fill the tank. *(It took me 3 attempts to get it right.)*

A Word of Warning. For the first fill of gas, (to just above the gauge) do it at home, so if you do have a leak from the gauge, you are handy to your tools. The last thing you want is to be stuck at a gas station with fuel leaking out of your dash panel all over the floor. Some fuel gauges and especially for the inexperienced person, can be troublesome first time around. Always make sure electrical connections behind the dash are insulated and do not touch the tank. Always carry a fire extinguisher.

If you can smell gas and still not detect a leak from the gauge, check the steering column clamp where it meets the gas tank. This area is prone to undue stress, especially if the clamp rubber has gone hard and lost its shock absorbing effect. The only real remedy if the tank is weeping, is to remove the tank for repairs. Try your local radiator shop for repairs. The joint may have to be re-riveted and soldered.



Tank can weep here.

Clamp gasket needs to be 'live' rubber. See your supplier.

Les. Pearson.

Weller's wonderful tribute to the Model A

America's Sweetheart will venture out for DeSoto Days

Pages 4-5 Thursday, Sept 25, 1997 JOURNAL HERALD DeSoto Days - Fall Festival

Story and Photos by Chuck Robinson

This was contributed by Liz & John Veix, who spent some time working in Kansas City, USA. They are former members of the Canterbury branch, MAFCA, and had a 28/29 Roadster Pickup. Via Jack Porter.



Some of the details on the hood of the Car

Dean Weller, sitting in his newly-finished America's Sweetheart

There's already a buzz about town about Dean Weller's newly finished Model A project. Let your curiosity get the best of you this time - there will be a chance to see it displayed at the DeSoto Days celebration Saturday.

The car is dubbed "America's Sweetheart" and befittingly it resembles a lace valentine honoring the Model A Ford - built for only three years from 1928 through 1931. Despite its short time of production, the vehicle has found a longer lasting place in the hearts of many in the country.

Weller's put in not just more than 1,000 hours work into it, but even suffered a hernia bending the cold-rolled quarter-inch steel rods that make up the body. He wouldn't allow his necessary operation until he had finished America's Sweetheart.

The body is see through. Neither the six cylinder engine, the interior bench seat and onyx gear shift knob nor anything else side is concealed. The wrought-iron lace work is painted white. Other than the body, which faithfully replicates the Model A, the rest is vintage Model A: the chassis, motor, tires, wheels.

It's hard to believe there's a chance the curators of the Henry Ford Museum in Dearborn, Mich. wouldn't snap at the chance to put the grand tribute to the Model A on display.

Weller's wonderful tribute to the Model A

That's what Weller said he hoped for, once he was done with the work of art and heart. All through the vehicle was the challenge of bending the steel - Weller chose cold rolled steel so the filigree body parts would sustain the impact of inquisitive hands, but that means it was harder to bend into place the first time. Then, once the lace scrolls and cursive script were bent to fit the flat pencil-on-paper pattern, it had to be curved to fit the curve of the Model A body. Weller used a rusted-out Model A roadster chassis for a template.

There were three big challenges in designing America's Sweetheart. First, the doors had to be strong enough to shut without flexing out of shape. Second, the rumble seat in back required a specially fashioned hinge and additional superstructure. The third big challenge - the biggest of the three - was the hood. It operates just like a regular Model A hood even though there's no tin to stiffen the bi-fold panels. Even more difficult, once the parts were fit together and curved properly, the parts had to be lifted so they could be welded on the back.

Before starting, Weller painstakingly drafted each part of America's Sweetheart, minutely detailing measurements and figuring how things would work and fit together "This is what kept me out of trouble," Weller said leafing through his notebook of blueprint-exact sketches and notes.

Weller's 83rd Street garage is full of previous vehicle restoration projects. He's taken on inventive projects, finding new challenges in some complex re-interpretations in rebuilding vehicles: the 1932 Buick Model 622S Rumble Seat Coupe luxury car with a license plate reading "TOOMUCH," the 1928 "Special Delivery" Model A van, a boat-tailed Model A with a back end fashioned from a 1950's pick up truck hood. The vehicles are his winter projects, usually completed in time for the Blue Ridge Mall Auto Show.

However, all of the previous projects pale in comparison to the work and ingenuity involved in this project. "I've done the ultimate. I'll never pull off anything that's tougher," Weller said. So, expect whatever upcoming new winter project Weller decides upon to be impressive, but not quite the eye-catcher that America's Sweetheart is, he said.

America's Sweetheart's complexity made him miss the traditional Blue Ridge show and one in Atcheson. It wasn't until the late-summer Olathe Auto Show that America's Sweetheart was ready to leave the garage. There, it caught the eye of more than its share of interested hobbyists. Obviously the popular favorite at the show, though not a restoration like the other competition entrants, America's Sweetheart was awarded the People's Choice award.

Modestly, Weller claimed ownership of his work of art on a small brass plaque on the front grille no bigger than two fingers wide. "By Weller of DeSoto" it reads. He said he hopes it does catch people eyes and perhaps inspires others to be interested in restoring Model As. It is a hobby that he brought him a lot of satisfaction, he said, as well as comradeship with other Model A collectors, many who regularly meet at his shop.

FOR SALE

Rushmore Motors (NZ) Ltd.

Veteran, Vintage, Post Vintage & Classic Vehicle Marketing.

Over 50 vehicles on offer. Subscribe for a free monthly emailed catalogue. Be first to know. Listing is completely free. No hidden costs.

027 22 45 045 OR rushmoremotors@xtra.co.nz

Rushmore Motors Ltd do not buy and sell motor vehicles.

For Sale.

Flywheel housing.

Pair of complete 1930 headlights. (One glass cracked)

Pair of 30/31 sedan new rear pressed guard stays.

Complete distributor including top with terminals.

4 1930 rear bumper bars. Bars only. No rust pitting.

Late 30/31 crankshaft.

1928/29 dash panel in good condition.

Contact Les at Rushmore Motors at **027 2245 045**
or rushmoremotors@xtra.co.nz

Model A Ford Shock Absorbers rebuilt as exchange \$240 each, or \$270 outright.

Phone Jack at 03 352 6672 ChCh or 0274 322 041

WANTED

Looking for a 16" wire wheel to suit a 1935 V8

Phone or Text David Rees on 027 483 3613

One 19 inch stainless steel spare wheel cover

Phone or text Barry. 027 443 5479 or barryhoff@xtra.co.nz

1930 or 1931 Tudor

Must be driving car needing virtually nothing done to it.

Phone or text Dave Goodman 027 4427 325 or dave-goodman@xtra.co.nz

Wanted tidy 1930 model a coup

Contact Grant 022 681 4083 or email callaghangrant@hotmail.com

Wanted 19" tyre, prefer Firestone in good condition

Contact Graham Evans 351 5919 or 027 320 7948

CLUB CAR REPORT

We have a booking for the club car for a wedding on 8th July.

Remember that the Club Phaeton is available for members to use. If your Model A is not mobile, give some thought to borrowing the Club car to join in one of our runs.

Guidelines for its use are printed inside the back of the membership list.

Graham Evans (ph. 03 351 5919) is the custodian of the car and looks forward to your call requesting the use of the car.

CANCELLATIONS:

In the event of unsuitable or doubtful weather, cancellations or postponements will be emailed to you.

SCRIPT CLOSING DATE

Help us make The Script a success. We would be grateful for any material you feel could be appropriate to include in our Club's newsletter.

CLOSING DATE for copy for the next Script is **20th July 2023**. Please send to the Editor:
afordscript@gmail.com.

The views expressed in this magazine are personal opinions of those who contribute and do not necessarily represent the views or methodology of the Canterbury Chapter of the Model A Ford Club of America. Thanks goes to MAFC member magazines and web sites as well as other sources who supply material to our club which we reprint in the magazine.

ANTIQUÉ FORD PARTS

**THE MODEL 'A' SPECIALISTS
DEREK & JUDY THOMASON**

**492 MAIN ROAD HOPE, R.D.1,
RICHMOND, NELSON
PH / FAX: (03) 544 7826**

Email: antiqueford@xtra.co.nz

OPEN 7 DAYS if HOME

**Large range of new and original parts at
REALISTIC PRICES**

Lucas tyres 19" & 21" \$285 including GST.

To order phone 035447826 or email antiqueford@xtra.co.nz

Early Ford Parts

Mufflers



Mufflers as per original design and shape.
Lock formed cone as original
Original length and also long tail pipe version available

\$375.20 inc GST

- Over 2000 new Model A parts in stock
- Competitive prices on all Model A parts.
- We also import larger items on indent. Air or Sea.

GET A QUOTE BEFORE SELECTING YOUR SUPPLIER!!!

Early Ford Parts
10 Grafton Street
Ph 03 379 7370

After Hours 021 637 656

www.earlyfordparts.co.nz

earlyfordparts@xtra.co.nz

All prices Include GST