

A Ford Script



March 2021

Official Newsletter of THE MODEL "A" FORD CLUB OF AMERICA

Canterbury New Zealand Chapter. PO Box 4212 Christchurch

COMMITTEE

| | | |
|-------------------|---------------|---------------|
| Club Captain | David Dacombe | (03) 313-7341 |
| Vice Club Captain | Peter Bayler | (03) 313-7067 |
| Treasurer | Brent Miles | (03)349-8108 |
| Secretary | Russell Genet | (03)329-9065 |

General Committee

| | | |
|-----------------------------|--|---------------|
| Glenn Birnie | | (03) 347-4849 |
| Andre Kraenzlin | | 021 996-223 |
| Kevin Mercer | | 021 716-845 |
| Lyn Miles | | (03)349-8108 |
| Vaughan Morrison | | 021 660-762 |
| John Olliver | | (03) 359 6360 |
| Lindsay and Annette Painter | | (03)342-5247 |

| | | |
|---------------------------|--------------|--------------|
| Webmaster | Graeme Scott | (03)384-8773 |
| Script Editor | Graham Evans | (03)351-5919 |
| Club Car Custodian | Graham Evans | 027 320-7948 |

WEBSITE 'Model A Ford Club Canterbury'

Did you know our club has its own Website, type 'Model A Ford club Canterbury' into google. There are a number of pages of interest including all the Scripts from 2014 (able to be downloaded and/or printed), notes on future events as well as market place where free adds for members can be posted. Any questions or suggestions please contact Graeme Scott (webmaster) at scotts.belfast.nz@gmail.com

COVER. Ladies choice at Foxdown

Hi Folks

The weather has been great for Model A motoring.

It was pleasing to see several of our members when we had the opportunity of visiting Daniel Smith's vehicle collection. I hope those who attended enjoyed themselves.

We have also had the Gymkhana that finished at Andy Fox's. I was impressed to see all the ladies driving the Model A's in the Gymkhana events. After the Gymkhana we were able to look through Andy's sheds and admire all his vehicles and museum. Thank you Andy.

For those travelling to Gisborne for the National Rally, I hope you have your vehicles tuned up and ready to go. When travelling, please remember to pull over safely when you can to allow traffic to keep flowing and not be held up by our slower vehicles. Also if travelling together, please remember to keep a distance between vehicles. We must keep other motorists and truck drivers happy.

We are holding a Hubble afternoon on 7th March for anyone who wants a practice run, see details in the Script.

Safe motoring

David

March 7th Sunday Hubley Race Practice meet at Glen Birnies, 608 Maddisons Road. 2pm. Please contact Graham Evans if intending to come, either ph 3515919, 0273207948 or email gaevans@xtra.co.nz

March 28th—April 8th National Meet in Gisborne

For those who are going to the National, the committee is gathering the names and dates, to help with contacts for when commuting, please contact Graham 0273207948 with your travel details

April 18th High Country Run

Starting from 2 Fat Possums Restaurant Car park in West Melton at 8.30a.m.

We have a full day's events planned so please be on time.

Any entrants from North of the Waimak River can meet us at Sheffield no later than 9.15a.m.

Briefing will be at Sheffield. If you like cheese it is advisable to bring a chilly bag as we will visit the Waiwarie Buffalo Cheese Factory, mid-morning. The day will finish at the Darfield Hotel for an early Dinner.

Please email us at khmercercer@xtra.co.nz to advise if you will be joining for the day and for dinner to assist with numbers at both places. Entry fee \$5 per car.

May 22nd Night Trial

June Mid Winter Function

November 12 –14th Show weekend away.

Ruth and Kevin Mercer will host a long weekend away to Oamaru, we will start at midday with lunch at the NOSH Café SH1 (at the turnoff to Waimate), staying Friday and Saturday Nights in Oamaru then everyone is free to make their own way home Sunday.

For anyone who is interested in a full weeks motoring we will continue from here following the East coast as closely as possible to Invercargill, then returning through the middle of Southland to Ettrick, Waipouri, Ranfurly, Kurow and Fairlie.

As accommodation will be limited please email us now to give an indication of numbers to allow us to confirm where the overnight stops will be. khmercercer@xtra.co.nz

We have been advised of details on booking Cook Strait Ferries

Tony Hirst does individual bookings for the Cook Strait Ferries at discounted prices.

To contact Tony Hirst Ph 021726711 or email tony@cookstraitcrossing.co.nz

Past Events— February 12th Visit to Daniel Smiths

It was good to see the Model T members at Daniel Smiths, we had a late invite to attend and join the Model Ters at their morning visit to this great collection of vehicle's. We were able to catch up with Mark & Debby Smith along with Rolly & Sonia Bell as they were involved in the Model T National. There have been a few additional sheds and vehicle's added since our last visit. Thanks to David Dacombe for setting up this event



February 14th Run and Gymkhana for Rex Chenery Trophy .

This event comprised 8 Model A's and a modern, which left the Peg for an interesting run taking us through Manderville and Rangiora and then on back roads to Waipara and then to Waikari.

At Waikari we turned towards Scargill until we got to Foxdown Road. On arriving at Foxdown we enjoyed our picnic lunch, before the Gymkhana started.

Following lunch David and Pam set us through the Gymkhana activities, with both sexes having an attempt at all activities.

It was good to see John Stewart from Rangiora join us for this outing in his 1928 Pickup.

Andy Fox opened his sheds to reveal a collection of cars and historical items, many of which had been collected by his Grandfather.

A very enjoyable rally thanks to David & Pam Dacombe for organising this event, it is especially of interest that David had prepared an enjoyable route.





Rear Brake Drums Moving In Too Far On The Axle.

How much end play (in and out) does the axle in question have? *It will move up and down.* Excess wear in the spider carrier can let the hub come too close to the backing plate, or wear on the axle or hub taper can also cause the brake drum to move too far in causing serious problems.

Remedy.

1. Fit unworn original parts which is a tall order these days. Some repro parts are of good quality.

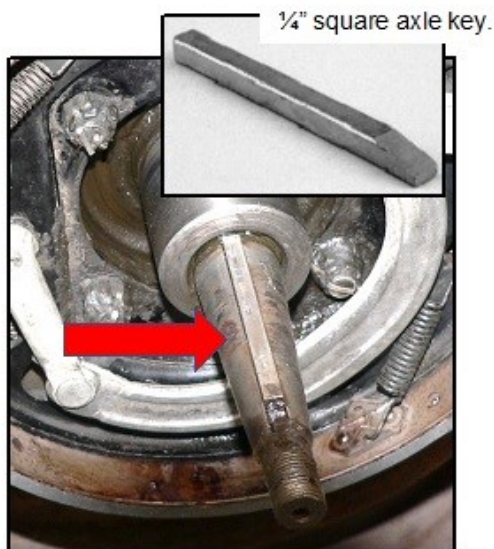
2. The easiest remedy which is not 100% permanent, is to fit an axle shim to the axle taper as arrowed. **Do not use two shims per side.** Suppliers have shims shaped to fit the axle taper. Or, Mr. Wattie or Mr. Oak make good shims which are thicker metal than the suppliers stock. You will have to cut and shape the shim to fit properly. I find these better if the manufactured shims are too thin and do not bring the axle out far enough. With shims fitted always retighten the axle nut after 100 miles, as the shims will bed in. Torque to 90ft/lbs.

3. The taper in the hub can wear. Wear here is hard to measure, but most wear will be on the axle taper.

4. Check your axle key and key way. If the keyway in the axle is worn it is time to consider a new axle which is a major job. **Key steel** is 1/4" square (pictured) and should fit the keyway snugly. If the axle key moves around in the keyway, put your thinking cap on.

Check the inside of your rear drums to see markings left by the emergency or service brake shoe edges. Some drums get almost cut right through which is a very serious situation and the vehicle should not be on the road. Any markings will normally mean the drum is moving in on the axle taper.

5. Replacing the spider carrier involves a lot of work but at times may have to be done to remedy the problem if everything else fails.



The fit of the drum to the axle taper.

All tapers should be fitted completely dry and should immediately lock up tight if in good condition. I have seen a NOS drum and NOS rear axle, with the axle gently inserted into the drum. They could not be parted to the owners (P K) annoyance and a puller had to be used.

All drums in reasonable order must be removed with a hub puller. There are quite a few versions and the three pronged version is one I prefer.

The rear axle nut.

This lonesome nut sitting on the end of the axle gets forgotten and at times abused. It is essential that it is tightened really tight to 90ft/lbs and if not many of the problems we have with drums and worn axles would not have happened.

When I am torquing rear axle nuts, or drive shaft nuts, which are the same size, I set my torque wrench at 90 lbs and tighten until it clicks. Then I tighten it some more until the castle nut lines up with the cotter pin hole. The end result is usually between 90 and 110 lbs, which I think is adequate. 120-150 I think is a little too much. I would worry about damaging threads at that high of a torque.

Pinning the axle nuts front and rear. There is a difference. No way you say!

If not pinned correctly the cotter pin can scrape and eventually cut the inside your hubcap, BUT only on the front wheel hubcaps where the axle is stationary. The rear axle nut and pin revolve with the hubcap and can cause no harm. Adjusting the tension (not torque) on the front axle nuts is a story for another day.

Now you have your rear hubs removed and it is a good time to check the two rear shock absorbers and links. Check the shock resistance by either removing the linkage or the arm from the shock and using an open ended spanner to move the shock. Re install the linkage tight enough so that it can be rotated by hand. Ensure sufficient grease is located at both ends of the link.

Headnut.



Gisborne Rally 2021 Registration Form (late penalty fee applies)

Registration Forms, along with a Merchandise Order Form, Indemnity Form and Judging Form. Have been sent out.

These do need to be completed in their entirety and returned before January 31 2021. There will be a late entry fee of \$100 after this date. FUNCTIONS: We will be having three main evening functions. Mr Graham Williams will be our MC for all evening functions and we thank him for coming onboard and jollying the nights along. WELCOME EVENING - Monday 29 March. The Rally will be officially opened by Gisborne's Mayor Rehette Stoltz followed by a Waiata and Kapa Haka Performance by one of the local schools. A three-course buffet meal will commence after this performance along with a cash bar.

Attire for this evening is smart casual. HOE DOWN - Wednesday 31 March. With Gisborne being known for its laidback country lifestyle, it seemed appropriate to include a Hoe Down. This will be a fun packed evening with variety and entertainment. We ask that you wear your country outfits and help create a fun down to earth atmosphere. There will be a three-course buffet meal and cash bar. There may also be a few surprises!! FAREWELL & AWARDS NIGHT - Saturday 03 April. A night where we can all join to celebrate a week of full-on activity and another National Rally under our belts. Celebrate the winners and encourage those that did not quite make it this time. A three-course buffet meal will be served, a cash bar available and entertainment also. Era costume would be preferred but not essential.

The cut-off date is January 31st 2021, after this date there will be a late fee charged of \$100. If you do pay your monies and we end up having to cancel the event due to COVID-19 all your monies will be refunded. If anyone has questions please do not hesitate to contact one of the team and we will be sure to assist.

MERCHANDISE: All our merchandise is being supplied by Robert Embroideries from Palmerston North. Nicky Robert has been amazing to deal with and we thank her for all the work she has done in bringing this selection to you. They have also embroidered our Rally badges which are on sale for \$20. The folding bamboo table was added as a bonus as these small tables are ideal for carrying around in the car, easy to fold away and pack into the pouch. The table will have the Rally logo etched onto the top as a reminder of this great wine loving district.

ACCOMMODATION: This is a reminder that if you are attending the rally please do not delay booking your accommodation. This is your responsibility and we wouldn't want you to miss out because you couldn't find a bed. If any participants do encounter issues please contact us so we can try to assist.

For official form please contact:

Karen Thomas Secretary 15th National Model A Ford Rally Gisborne 2021 Organising Committee – David Mossman, 0272 350 444; Rob Brown, 027 474 5726; Errol McAlpine, 027 454 3983; Tony Bartlett, 027 272 5648; Karen Thomas, 027 419 0191; Kristina Rarere 022 367 5776 or email gisbornemodelafordrally@gmail.com

Are you going to the Gisborne National Meet?

Murray Ashby, the Concours Co-ordinator is appealing for volunteers to help with the car judging at Gisborne. The judging will take place on Monday morning, the first day of the rally. Judges will work in pairs and only one needs to be experienced. Therefore, even if you don't know anything at all about Model A's, you can still join in. If that's you, it is an opportunity to study and discuss various aspects of the Model A and to learn a bit about your own car.

Judging is divided into 23 areas of the A, such as paint, panels, under hood, upholstery, etc, etc. Each pair of judges will do two or maybe three areas. Judging sheets are provided. There will be about a dozen cars judged. The work is easy and sociable and there is nothing else on that morning.

If you have not already volunteered, please email Murray at –
anneandmurrayashby@gmail.com

WANTED

Literature on the Model B Carburetor
Contact Andre Kraenzlin 021996223 or
Lunatigs@hotmail.com

Rushmore Motors (NZ) Ltd.

Veteran, Vintage, Post Vintage & Classic Vehicle Marketing.

Over 50 vehicles on offer. Subscribe for a free monthly emailed catalogue. Be first to know. Listing is completely free. No hidden costs.

027 22 45 045 OR **rushmoremotors@xtra.co.nz**

Rushmore Motors Ltd do not buy and sell motor vehicles.

A selection of Model 'A' parts for sale.

28/29 headlight rim in ex. cond.

30 fuel tap.

Headlight conduits 1930.

Fuel gauge. (Early with magnifying glass)

Column control rod levers (pair).

Distributor manifold toggle.

**Sold as one lot
\$60.00**



Sold separately. Phaeton / Roadster 28/31 rear top frame in ex. cond. No rust. Both sides. Slotted screws supplied, plus 2 original Robertson screws free.

\$175.00

ROBERTSON SCREWS

Suitable for the Model A and T Fords plus other
1920's—30's Canadian
built cars.



Email kandjstraw@gmail.com or
phone Kevin 0295-245-048



for details of all the various sizes available.

FOR SALE

Model A Ford Shock Absorbers rebuilt as exchange \$210 each, or \$240 outright.

Ph. Jack at 03-352-6672 ChCh. or 0274-322-041

CLUB CAR REPORT

No running this year yet. The car has a current Rego & WOF

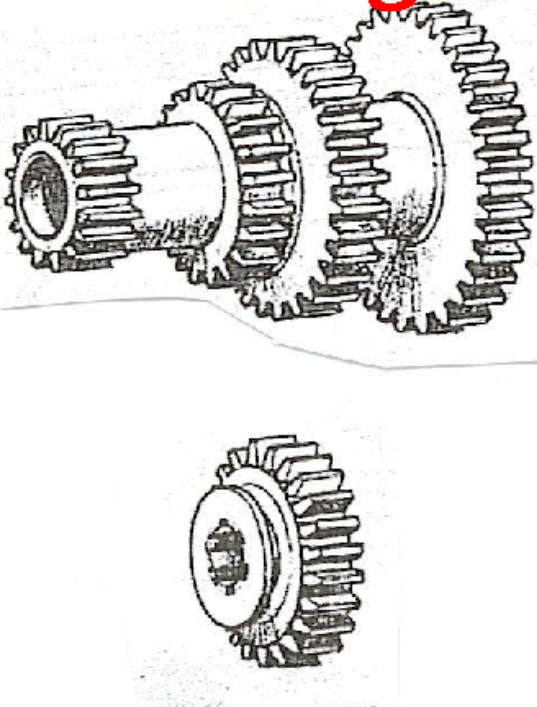
If you have your car unserviceable for a run, you can book the car by calling

Graham on 3515919 or 0273207948

Help us make The Script a success. We would be grateful for any material you feel could be appropriate to include in our Club's newsletter.

CLOSING DATE for copy for the next Script is 20 March 2020. Please send to the Editor, Graham Evans afordscript@gmail.com. The views expressed in this magazine are personal opinions of those who contribute and do not necessarily represent the views or methodology of the Canterbury Chapter of the Model A Ford Club of America. Thanks goes to MAFC member magazines and web sites as well as other sources who supply material to our club which we reprint in the magazine.

Model-A-gearbox upgrade.



Improved 2nd gear ratio by 15% to increase overall road speed in 2nd gear and hill climb ability without stress revving your engine.
With the installation of this new cluster and 2nd gear, this is all that is needed to achieve the effect desired i.e.: higher speeds in 2nd gear, making traffic driving and hill climbing not a problem.

COST
All new cluster and 2nd gear **\$1890.00 + P&P**

CONTACT
Errol or Linda McAlpine
On
1127 Scenic Drive
Swanson
Auckland 0614
New Zealand

PH (09) 8329818
MOBILE (0274) 543 983
EMAIL: vet.vin@xtra.co.nz
Web; www.veteranvintagecars.co.nz

CLUB CAR :

Remember that the Club Phaeton is available for members to use. If your Model A is not mobile, give some thought to borrowing the Club car to join in one of our runs.

Guidelines for its use are printed inside the back of the membership list.

Graham Evans (ph. 03 351 5919) is the custodian of the car and looks forward to your call requesting the use of the car.

CANCELLATIONS : In the event of unsuitable or doubtful weather, cancellations or postponements will be emailed to you.

We have printed the annual run organiser for the coming events in this script.

ANTIQUUE FORD PARTS**THE MODEL 'A' SPECIALISTS
DEREK & JUDY THOMASON****492 MAIN ROAD HOPE, R.D.1,
RICHMOND, NELSON
PH / FAX: (03) 544 7826****Email: antiqueford@xtra.co.nz****OPEN 7 DAYS if HOME****Large range of new and original parts at
REALISTIC PRICES**

Veteran **AND** Vinfage

Spares and Repairs Ltd. - Model T & Model A

Ph: 09 8329818 or 027 4543983

Email: vet.vin@xtra.co.nz



**LUCAS
BLACKWALL
TYRES 19"**
475x500x19
\$310 each



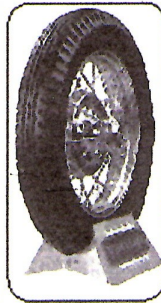
**LUCAS
BLACKWALL
TYRES 21"**
440x450x21
\$310 each



**LUCAS
BLACKWALL
TYRES 30x3¹/₂"**
\$ 453 each



**FIRESTONE
BLACK
TYRES 19"**
475x500x19
\$442 each



**FIRESTONE
BLACK
TYRES 21"**
440x450x21
\$442 each



**FIRESTONE
WHITEWALL
TYRES 19 OR 21"**
475x500x19
440x450x21
\$ 538.20 each

(Prices subject to change without notice)

Prices exclusive of GST ex **Auckland**

NO HIDDEN COSTS

Early Ford Parts

Muffler's



Muffler's as per original design and shape.
Lock formed cone as original
Original length and also long tail pipe version available

\$320.00 inc GST

- Over 2000 new Model A parts in stock
- Competitive prices on all Model A parts.
- We also import larger items on indent. Air or Sea.

**GET A QUOTE BEFORE SELECTING YOUR
SUPPLIER!!!**

Early Ford Parts
10 Grafton Street
Ph 03 379 7370
After Hours 021 637 656
www.earlyfordparts.co.nz
earlyfordparts@xtra.co.nz
All prices Include GST